



**8901 Kaniš Road
Little Rock, AR 72205
(501) 570-5000**



**Connecting Children & Families to Services
and Community Resources**

2021-2022

Contents

BASIC NEEDS	3
UTILITIES	7
UTILITY ASSISTANCE	8
TUTORS, MENTORS & EDUCATIONAL CONSULTANTS.....	10
PULASKI COUNTY PUBLIC	12
& CHARTER SCHOOLS	12
UNIVERSITIES & COLLEGES	14
HOSPITALS/HEALTH CARE SERVICES.....	15
Mental Health Care Services/Treatment	17
DENTAL PROVIDER’S LIST	20
PRIMARY CARE PHYSICIANS LIST	21
DISABILITIES COMMUNITY RESOURCES	22
NON – EMERGENCY ALTERNATECARE SETTINGS	22
PULASKI COUNTY HEALTH UNITS.....	22
PHARMACIES (CENTRAL LITTLE ROCK)	24
HEALTH EDUCATION.....	25
LIBRARIES	26
ARTS/MUSEUMS.....	28
COMMUNITY & RECREATION CENTERS.....	29
PARKS & RECREATION.....	31
YOUTH.....	32
ANIMAL CARE AND SERVICES.....	34
UAMS PROGRAM SITES 2019-2020.....	35
NEIGHBORHOOD RESOURCE CENTERS	36
SENIORS	37
DISABLED/EXCEPTIONAL PEOPLE.....	38
ENVIRONMENT/OUTDOORS.....	40
LEGAL/LAW ENFORCEMENT SERVICES	40
Domestic Violence/Crime	43
SUBSTANCE ABUSE	43
DEPARTMENT OF HUMAN SERVICES LOCATIONS IN PULASKI COUNTY	44
COMMUNITY RESOURCE WEBSITES	44

BASIC NEEDS

Agency/Organization	Address	Phone	Services Provided
AMBOY COMMUNITY FOOD PANTRY	100 AUBURN DRIVE NLR, AR 72118	753-2777	Open Monday & Thursday 9:00 am – 12:00 pm. Proof of NLR or Maumelle residency (utility bill), SS cards for each family member, and photo ID required.
AR FOODBANK NETWORK & ARKANSAS RICE DEPOT	4301 W. 65 TH ST. LITTLE ROCK, AR 72209	565-8121 413-0239	Provides food to churches, treatment centers, schools, colleges, after-school programs, food pantries and soup kitchens.
AR WOMEN OF ESSENCE Contact: Valerie Dewese	9014a McCain Blvd. North Little Rock, AR 72116	993-0494	Serves the State of Arkansas through charitable events to help needy citizens.
BETTER COMMUNITY DEVELOPERS, INC. Contact: Deborah Bell	3604 W. 12 th St. LITTLE ROCK, AR 72204	663-7223 663-9181	Improves the quality of life for indigent people. Open Monday – Friday from 9am – 6pm.
BULLOCK TEMPLE	1513 S. PARK ST. LITTLE ROCK, AR 72202	375-1581	Food Pantry opens on Monday @ 2:00 p.m. on Thursdays @ 4:30pm. ID required.
CHRIST TEMPLE OUTREACH CENTER	1923 S. ARCH ST. LITTLE ROCK, AR 72206	376-1664	Food Pantry open Monday through Friday 9am- 3:30pm and Tuesday & Thursday 10:00am – 2:00pm. Picture ID required and proof of income.
CHURCH AT ROCK CREEK	11500 WEST 36 TH STREET LITTLE ROCK, AR 72211	225-8684	Food pantry open Tuesday – Friday between 8:00am & 10:00am. Photo ID required.
FIRST BAPTIST CHURCH	2015 MAIN STREET NLR, AR 72114	758-1525	Food pantry open Tuesday @ 11am – 1pm. Photo ID and proof of address required.
FIRST CHRISTIAN CHURCH FOOD PANTRY	1500 N. MISSISSIPPI ST. LITTLE ROCK, AR 72207	225-5656	Open Fridays 10:30 am – 12:00 pm. Photo ID required.
FIRST PENTECOSTAL CHURCH OF JESUS CHRIST	1401 CALVARY RD. NLR, AR 72116	758-3090	Food pantry open Fridays 10 a.m to 3 p.m. Picture ID required. Residents of Sherwood, NLR, and

			Jacksonville only.
FIRST CHRISTIAN CHURCH OF SHERWOOD	2803 E. KIEHL AVE SHERWOOD, AR 72120	835-5505	Open Friday 10:30 AM – 12:00 pm. Picture ID required and proof of residency. Sherwood & Jax.
GEYER SPRINGS UNITED METHODIST CHURCH	5500 GEYER SPRINGS ROAD LITTLE ROCK, AR 72209	565-3175	Open 1 st & 3 rd Thursday 9:00 am – 12:00 pm. Serves residents of the 72209, 72206 & 72103 Zip Code area ONLY. Picture ID required.
HEIFER PROJECT INTERNATIONAL (LITTLE ROCK)	1 WORLD AVE LITTLE ROCK, AR 72202	376-6836	Uses livestock and environmental training as catalyst for change, worldwide.
HELPING HAND OF GREATER LITTLE ROCK	1601 MARSHALL STREET LITTLE ROCK, AR	372-4388	Helps individuals meet basic human needs while assisting them towards independence. Food pantry open Monday thru Thursday 9:00 AM – 12:30 PM. Must bring Identification. Food and inexpensive thrift store clothing available.
LITTLE ROCK COMPASSION CENTER	3618 WEST ROOSEVELT LITTLE ROCK, AR 72204	296-9114	Open daily 9:00 – 11:30 am Food, Clothing and Shelter First come, first served; check in 3-7 p.m.
IMMANUEL BAPTIST CHURCH – FOOD PANTRY	315 N. Shackelford Road, Little Rock, AR 72211	376-3071	Open Tuesday 10:00 am – 2:00 pm. ID and proof of residence required. Call church office to see what zip code areas are served.
MOSAIC CHURCH OF CENTRAL ARKANSAS	6221 COLONEL GLENN ROAD SUITE #A LITTLE ROCK, AR 72204	562-3336	Open Tuesday 1:00 p.m. until food is gone. Must reside in the 72204 area. Food, Clothing and Utility Assistance. Need Identification.
OUR HOUSE	302 ROOSEVELT RD. LITTLE ROCK, AR	374-7383	Provides help for those who are homeless, including employment/ housing assistance. Child care, out of school programs, assistance with mental illness, re-entry are available.
RIVER CITY MINISTRY	1021 E. WASHINGTON AVE. NLR, AR 72114	376-6694	Food Pantry open daily 9:30am.-11:30 a.m. and 12:00 p.m. -1:00 p.m. Open Monday - Friday 8am-breakfast; 11:30-lunch – 3pm for showers and housing programs, homeless day shelter

			services; Photo ID required. Charitable medical, dental, and vision clinic, no ID required.
SALVATION ARMY Central Arkansas Area Command -	1111 W. MARKHAM LITTLE ROCK, AR, 72201 1508 W. 18 th NLR, AR, 72114 129 N. Main St., Benton, AR, 72015	374-9296 LR 758-7297 315-1058	To provide emergency aid to local and transient people in need. Locations: Little Rock office opens M-F 8:30am – 3pm NLR office open M/W/F 8am-noon/ 1pm-3pm Saline County office open Tuesday and Thursday 9am-3pm
FIRST PRESBYTERIAN CHURCH STEW POTS	800 SCOTT STREET LITTLE ROCK, AR 72201	372-1804	Free lunch served Monday thru Friday 12:00 -1:00 pm. Not handicapped accessible.
WATERSHED Contact: Victoria Avery, case worker	3701 SPRINGER BLVD LITTLE ROCK, AR 72206	378-0176	Helps people help themselves by providing food, jobs, shelter and utilities.
ARKANSAS STATE VETERANS CEMETERY Contact: ask for manager or assistant director	1501 WEST MARYLAND AVE. NLR, AR 72120	683-2259	Operated by the Department of Veterans Affairs, to commemorate the military services of our deceased Veterans. Services are offered for those who were honorably discharged with the required amount of active duty services.
CENTRAL BAPTIST CHURCH FOOD PANTRY Contact: Dale Prater	9618 HIGHWAY 107 SHERWOOD, AR	771-1125	Clothing and food pantry Open Wednesdays 3:30 – 5:30 pm.
UNIVERSITY OF ARKANSAS DIVISION OF AGRICULTURE – COOPERATIVE EXTENSION SERVICE	2301 SOUTH UNIVERSITY AVENUE LITTLE ROCK, AR 72204	671-2000	Provides research-based information through non-formal education to help Arkansans improve their economic well-being and the quality of their lives.
SMALL BUSINESS ADMINISTRATION – SBA	2120 RIVERFRONT DRIVE, SUITE 250 LITTLE ROCK, AR	324-7379 Emergency 659-2955 296-3000	Offers aid, counsels, assists and protects the interests of small business concerns, In the event of a disaster, if you are a homeowner, renter or business owner you will need to register with the SBA.
SAINT FRANCIS HOUSE - THE BENEFIT BANK OF ARKANSAS WWW.STFRANCISMINISTRIES.COM	2701 S. ELM ST. LITTLE ROCK, AR 72204	664-5036	Provides comprehensive information and referral services available in the community.
ROCK REGION METRO	901 MAPLE STREET NLR, AR 72114	324-1447	Pulaski County Public Transportation System.

HOUSING AND URBAN DEVELOPMENT (HUD)	425 WEST CAPITOL AVENUE SUITE 1000 LITTLE ROCK, AR	Emergency 982-0741 TTY 324-5931 918-5700 Office hours: M-F 8am- 4:30pm	Providing housing assistance for low-income persons. Working to create, rehabilitate and maintain the nation's affordable housing. Enforcing the nation's fair housing laws. Helping the homeless. Spurring economic growth in distressed neighborhoods. Helping local communities meet their development needs.
FAMILY SERVICE AGENCY	628 WEST BROADWAY SUITE 203 NLR, AR 72118	372-4242 Ext. 328 or 325	Offers Drug & Alcohol Safety Education Program, Counseling, Employee Assistance, Prevention Services, Substance Abuse, Trans Parenting and Violence Intervention.
WE CARE INC.	3523 SLINKER ROAD, LITTLE ROCK, AR 72206	897-5096	Provides food for people in need.
311 - CITY OF LITTLE ROCK	500 WEST MARKHAM STREET LITTLE ROCK, AR	371-4510 371-4697	Programs that have implemented 311 as a dialing code to help people access non-emergency police and other local government services such as public works, animal control and code compliance.
LITTLE ROCK SCHOOL DISTRICT BOOST PROGRAM	501 SHERMAN ST. STUDENT REGISTRATION OFFICE LITTLE ROCK, AR	Service Intake 447-2950	Services for students without homes or from families in financial need.
COMMUNICATION PLUS INTERPRETER SERVICES AND CONSULTATION	8615 Cantrell Road LITTLE ROCK, AR 72227	Voice/TTY 224-2521	Interpreter and consultation services for public and private sector. Business/corporations and industry, federal, state, city and governmental agencies.

UTILITIES

Central Arkansas	Electric	Gas	Water	Telephone
LITTLE ROCK	Entergy 1-800-368-3749 M-F 7am-7pm Outage/Emergency 1-800-968-8243 24/7	Center Point Entergy 1-800-992-7552	Utility Billing Services 372-5161	AT&T 1-844-843-0918
NORTH LITTLE ROCK NEIGHBORHOOD SERVICE	NLR Electric 975-8888 Outage reporting 1-888-728-4004	Reliant Energy ARKLA 1-800-992-7552	NLR Water 975-8920	AT&T 1-844-843-0918
MAUMELLE	Entergy 1-800-368-3749 M-F 7AM-7PM Outage/Emergency 1-800-968-8243 24/7	Reliant Energy ARKLA 1-800-992-7552	Central Arkansas Water 851-3070 M-F 8:30am – 4:45pm	AT&T 1-844-843-0918
JACKSONVILLE	Entergy 1-800-368-3749 M-F 7AM-7PM Outage/Emergency 1-800-968-8243 24/7	Center Point Energy 1-800-992-7552	Jacksonville Water Works 982-6561	Verizon 1-844-773-4410

North Little Rock City Services Building – Utilities

120 Main Street, North Little Rock, AR 72114 – 8:00 am to 4:30 pm Monday-Friday. City services main phone number is 501-975-8888. Offers electric utility customer to set up new accounts and do inquires for the listed services in the main lobby of the City Services Building.

Comcast Cable Branch Office, Central Arkansas Water, Center Point Energy, AT&T (SBC) Communications, North Little Rock Waste Water (Sewer), RECYCLING, info (Waste Management of Arkansas).

Jacksonville – Utilities

Center Point Energy Gas Co. – 2205 E. Roosevelt - Little Rock, AR 72206 – Mary Collins (501) 377-4556 (501) 377-4551 – Fax (501) 377-4590.

Entergy – P. O. Box 399 – Jacksonville, AR 72078 – (501) 377-4000 – Fax (501) 982-1725

Comcast Cablevision of Arkansas – 2714 S. Shackelford Rd – Little Rock, AR 72204 1-800-934-6489
Fax 501-375-1042

First Electric Cooperative – 1000 S. J. P. Wright Loop Rd. – P. O. BOX 5018 – Jacksonville, AR 72078 – (501) 982-4545 Fax (501) 985-4587.

UTILITY ASSISTANCE

Agency/Organization	Address	Phone	Services Provided
CENTRAL ARKANSAS DEVELOPMENT COUNCIL (C.A.D.C.)	5401 S. UNIVERSITY AVENUE LITTLE ROCK, AR 72209 2 CRESTVIEW PLAZA P.O. Box 5075 JACKSONVILLE, AR 72078	603-0909 457-5621	Assistance with utility bills and support with energy conservation. Provides financial assistance to help families meet home energy costs including gas, electricity and propane expenses. The program also offers weatherization services and case management activities to help households reduce energy costs and the need for future financial assistance. Offers free tax preparation program and quarterly commodity food distribution in the community.
CUSTOMERS NORTH OF ARKANSAS RIVER CITY MINISTRY - CUSTOMERS SOUTH OF ARKANSAS RIVER WATERSHED HUMAN AND COMMUNITY DEVELOPMENT AGENCY-	1021 EAST WASHINGTON AVE. NLR, AR 3701 SPRINGER DRIVE/ CONFEDERATE BLVD./ COLLEGE STATION LITTLE ROCK, AR	376-6694 Assistance Screening Hours 10am - 2pm Wednesday ONLY 378-0176 Assistance Screening Hours 8:00am – 5:00pm Monday - Friday	"To Help to Others Customer Assistance Fund" is a program that extends a hand to customers who are in need of help with paying their utility bills to Central Arkansas Water (CAW) and Utility Billing Services (UBS) partners. The program is about neighbors helping neighbors.
CENTER POINT ENERGY/ARKLA	2205 E. ROOSEVELT RD. LITTLE ROCK, AR 72206	1-800-992-7552	Alternates date payment plan for elderly and disabled. With Physician's Certificate of Medical Emergency – they will not turn gas off.
ELECTRICITY ENTERGY	900 S. LOUISIANA ST. LITTLE ROCK, AR 72201	1-800 368-3749 377-4000	Delayed termination of service, Life Support Program for the elderly, handicapped, and seriously ill persons, Sales Tax

			exemption for customers whose income is low.
TELEPHONE ARKANSAS LIFELINE & LINK UP AMERICA	DEPARTMENT OF HUMAN SERVICES	1-888-614-8722	A government program that offers qualified low income households a discount on their monthly local telephone bill. Each state has its own guidelines to qualify. To apply call your local telephone company.
AR DEPARTMENT OF HUMAN SERVICES (DHS) - DIVISION OF COUNTY OPERATIONS Low Income Home Energy Assistance Program (LIHEAP)	PO Box 1437, SLOT S301 LITTLE ROCK, AR 72203	Contact local DHS County Office for more information 682-8726	Provides financial assistance to help families meet home energy costs including gas, electricity and propane expenses. The program also offers weatherization services and case management activities to help households reduce energy costs and the need for future financial assistance.
HELPING HAND OF GREATER LITTLE ROCK	1601 MARSHALL ST. LITTLE ROCK, AR 72216	372-4388	Provides limited utility, rental, and prescription assistance to families with low income, when funds are available.
HELPING PEOPLE WITH AIDS (HPWA)	1021 JESSIE ROAD LITTLE ROCK, AR	666-6900	Financial assistance for individuals living with Acquired Immune Deficiency Syndrome (AIDS). Provides utility bill payment assistance.
ISLAMIC CENTER	3224 ANNA STREET LITTLE ROCK, AR	565-4930 372-1942	Provides assistance with utility bills and emergency money for people in need.
SAINT FRANCIS HOUSE - THE BENEFIT BANK OF ARKANSAS	2701 SOUTH ELM ST. LITTLE ROCK, AR	664-5036 X 229	Provides limited assistance with prescription and utilities when funds are available. Must have a shut-off notice. Call between 8:30 am – 11:00 am. Must provide photo ID, Social Security card, and proof of income.
SECOND BAPTIST CHURCH - LITTLE ROCK	1709 JOHN BARROW RD. LITTLE ROCK, AR 72204	223-2323	Provides financial assistance for individuals who are in emergency situations. Open Tuesdays, Wednesdays, and Thursdays 10:00 am – 12:00 pm. Photo ID and utility bill or current vehicle registration required. Food pantry open Monday through Friday.

SALVATION ARMY - LITTLE ROCK AREA COMMAND	1111 WEST MARKHAM STREET LITTLE ROCK, AR	374-9296	Provides limited financial assistance with purchasing drivers licenses/ID, birth certificates or small items that are necessities, which people with limited or no income will not be able to purchase.
--	--	----------	---



TUTORS, MENTORS & EDUCATIONAL CONSULTANTS

Agency/Organization	Address	Phone	Services Provided
ARKANSAS LITERACY COUNCILS, INC/ADULT EDUCATION	124 W. Capitol Ave. Suite 1000, LITTLE ROCK, AR 72201	907-2490 1-800-264-7323	Supports over 50 literacy councils statewide with the effort to recruit and train volunteers to help others improve their basic reading, writing, and math and comprehension skills.
BIG BROTHERS BIG SISTERS OF CENTRAL ARKANSAS	312 W. PERSHING BLVD. NLR, AR 72114	374-6661	Match adults with children and youth to make a positive difference in their lives.
BOOST - LITTLE ROCK SCHOOL DISTRICT HOMELESS EDUCATION PROGRAM	501 SHERMAN ST., LITTLE ROCK, AR, 72202	447-2988	Assists with enrollment, transportation, school supplies, etc., in order to promote the enrollment, attendance and Success of homeless children and youth in the Little Rock School District.
JEFFERSON STARS	2600 N. MCKINLEY LITTLE ROCK, AR, 72207	447-5000	Reading-tutoring program for students at Thomas Jefferson Elementary School, grades K-2.
PULASKI COUNTY LEARNING CENTER	P.O. Box 976 1900 N. PINE STREET NLR, AR, 72114	753-5858	To decrease illiteracy among children and adults.
LITERACY ACTION OF CENTRAL ARKANSAS	100 ROCK, SUITE 132, LITTLE ROCK, AR	372-7323	Teaches basic reading, writing, and ESL one-on-one courses for adults.
LITTLE ROCK SCHOOL DISTRICT VOLUNTEERS IN PUBLIC SCHOOLS (VIPS)	616 N. HARRISON ST. LITTLE ROCK, AR 72205	447-8477	Recruits, trains and coordinates volunteers in the Little Rock Public Schools.
NLR SCHOOL DISTRICT VOLUNTEERS IN PUBLIC SCHOOLS (VIPS)	2700 POPLAR ST. NLR, AR	771-8165	Recruits, trains and coordinates volunteers in the North Little Rock Public Schools.
POSITIVE	6915 GEYER	562-5223	After school education and

ATMOSPHERE REACHES KIDS (PARK)	SPRINGS ROAD LITTLE ROCK, AR		recreational service program for at-risk youth.
PULASKI COUNTY SPECIAL SCHOOL DISTRICT PEOPLE ASSISTING LOCAL SCHOOLS (PALS) LITTLE ROCK	925 EAST DIXON ROAD LITTLE ROCK, AR, 72206	234-2000	Provides assistance in the education of PCSSD students.
SCORE "COUNSELORS TO AMERICA'S SMALL BUSINESS"	2120 RIVERFRONT DRIVE, SUITE 250 LITTLE ROCK, AR	324-7379 ext 302	Provides entrepreneurial education for small businesses.
SHEPHERD'S RANCH	1401 MAIN ST. NORTH LITTLE ROCK, AR, 72114	372-5700	Provides positive influence to children and youth through mentoring and summer camps.
UALR CHILDREN INTERNATIONAL	2510 FAIR PARK LITTLE ROCK, AR	501-916-3541	Offers after-school and Saturday programs for health, dental, education and family services.
EMMA RHODES EDUCATIONAL CENTER- HOUSE OF VISION MULTIPURPOSE CENTER	1815 WRIGHT AVENUE LITTLE ROCK, AR	501-372-0277	Education and Multipurpose Center offers its service free of charge, providing GED classes for youth and high school dropouts and ex-felons. The program offers adult education classes for the GED, refresher courses for adult graduates, non-credit computer literacy classes, life-skills training, and even conversational Spanish classes.
GIDEON MATH & READING CENTER	2316 DURWOOD RD. LITTLE ROCK, AR 1121 S. BOWMAN RD., SUITE C-4 LITTLE ROCK, AR	503-1938	Tutoring in math and reading
SYLVAN LEARNING CENTER	11220 N. RODNEY PARHAM RD. STE 1 LITTLE ROCK, AR	288-9877	Tutoring Hours: Mon-Sat, Hours Vary.
ACCESS SCHOOLS	10618 BRECKENRIDGE DR. LITTLE ROCK, AR	217-8600	Special Education Schools and Outpatient therapy
HUNTINGTON LEARNING CTR. WEBSITE	11525 CANTRELL RD. SUITE 603 LITTLE ROCK, AR	223-2626	Tutoring
SIX BRIDGES EDUCATION CENTER	4202 A CAMP ROBINSON ROAD NLR, AR 72116	291-1772	Offers English, Computer, and GED classes, clothing closet, emergency assistance for shelter food, and a free computer lab.



**PULASKI COUNTY PUBLIC
& CHARTER SCHOOLS**

Agency/Organization	Address	Phone	Services Provided
NORTH LITTLE ROCK SCHOOL DISTRICT WWW.NLRSD.ORG	2700 N. POPLAR ST NLR, AR 72214	771-8000	The smallest of the three public school districts in Pulaski County with an enrollment of about 9,000 students. The district has 14 elementary schools and four middle schools. High school students attend North Little Rock High school, with 9 th and 10 th graders attending East Campus on 2400 Lakeview Road and those in grades 11 th and 12 th going to West Campus on 101 W. 22 nd St. Students are assigned to school based on attendance zones, although they can choose to attend magnet schools or one of North Little Rock's Specialty schools.
LITTLE ROCK SCHOOL DISTRICT WWW.LRSD.ORG	810 W. MARKHAM STREET LITTLE ROCK, AR 72201	447-1000	The state's largest school district with more than 24,000 students. The district operates 50 schools, including elementary, middle and high schools. Most elementary schools offer preschool classes.
PULASKI COUNTY SPECIAL SCHOOL DISTRICT WWW.PCSSD.ORG	925 EAST DIXON ROAD LITTLE ROCK, AR	234-2000	The district serves students who live in Pulaski County outside the LR and NLR city limits. District students can opt for interdistrict schools, county schools with specialty programs or Little Rock magnet schools, though acceptance depends on available slots and your home's location.
ACADEMICS PLUS CHARTER SCHOOL WWW.ACADEMICPLUS.ORG	600 EDGEWOOD DRIVE MAUMELLE, AR Maumelle Charter High School	803-9730 851-3333	The charter school for 100 pupils will use the Core Knowledge Sequence. The college preparatory curriculum will be supplemented with character education,

	Maumelle Charter Elementary School	803-0066	technology, physical fitness and community services. The school year will be 188 days, 10 days longer than the state-mandated school year. The school will eventually house 400 to 500 students in grades 6 th through 12 th . Uniforms are required.
	Scott Charter School	961-1744	
E-STEM PUBLIC CHARTER SCHOOLS, INC. (WWW.ESTEMSCHOOLS.ORG)	200 RIVER MARKET AVE. SUITE 225 LITTLE ROCK, AR 72201	324-9200	Students will study economics related to the fields of Science, Technology, Engineering and Math (STEM) using the Arkansas core curriculum, supplemented with a challenging course of study that includes foreign languages, advanced math and science and a broad liberal arts background. Combined with an extended school day and a longer school year, (STEM) is a college preparatory environment focusing on individual student academic achievement.
ESTEM HIGH SCHOOL	123 W. 3RD ST., LITTLE ROCK, AR 72201	748-9335	
ESTEM ELEMENTARY/ MIDDLE SCHOOL	112 W. 3 RD ST., LITTLE ROCK, AR 72201	748-9200	
ESTEM EAST VILLAGE ELEMENTARY SCHOOL	410 SHALL AVE. LITTLE ROCK, AR 72202	214-6810	
ESTEM EAST VILLAGE JUNIOR HIGH SCHOOL	400 SHALL AVE. LITTLE ROCK, AR 72202	214-6710	
FRIENDSHIP ASPIRE ACADEMY PUBLIC CHARTER SCHOOL	361 W. 25 TH ST LITTLE ROCK, AR 72204	240-2907	K-1 ST Grade, Free Tuition, 2 Free Uniforms, Free Before and After Care, Computers in every classroom, STEM Focused Curriculum.
SCHOLARMADE ACHIEVEMENT PLACE	2410 BATTERY ST. LITTLE ROCK, AR 72206	404-0012	K-6. Offers Personalized Learning Approach, students spend some of the day engaged in self-paced digital learning. Place-based education (PBE) immerses students in local heritage, cultures, landscapes, opportunities and experiences, using these as a foundation for the study of language arts, mathematics, social studies, science and other subjects across the curriculum. Offers social and emotional curriculum.

*Magnet Schools – If your child is wild about foreign language, math or the arts, a magnet school might be your best choice. These schools offer an expanded curriculum within the school’s theme, in addition to a well –rounded general education.

*Early Childhood education (Pre-Kindergarten and the Rockefeller Early Childhood Magnet School), before and after school care, gifted and talented programs, and special needs programs. The district has opened the Fair Park Early Childhood Center, which is a pre-kindergarten facility staffed by early childhood-certified teachers. **For more information contact 447-4400.**

*Arkansas Better Chance for School Success program the only eligibility factor is income. Any 3-year-old or 4-year-old whose family earns at or below 200 percent of the Federal Poverty Level is eligible. For programs operating with continuation funds (ABC) a child from birth to 5 years of age must meet one of several criteria to be eligible. **For more information contact 1-800-445-3316.**



UNIVERSITIES & COLLEGES

Agency/Organization	Address	Phone	Services Provided
UNIVERSITY OF AR LITTLE ROCK (WWW.UALR.EDU)	2801 S. UNIVERSITY AVE. LITTLE ROCK, AR	569-3000	Four Year Institution.
UNIVERSITY OF AR CLINTON SCHOOL OF PUBLIC SERVICE (WWW.CLINTONSCHOOL.UASYS.EDU)	1200 PRESIDENT CLINTON AVE. LITTLE ROCK, AR, 72201	683-5200 683-5228	The only graduate school in the nation offering a Master of Public Service degree. The third graduate school in the country to be located on the grounds of a presidential library.
UNIVERSITY OF AR PINE BLUFF (WWW.UAPB.EDU)	1200 N. UNIVERSITY DRIVE PINE BLUFF, AR	1-870- 575-8000	Four Year Institution.
HENDERSON STATE UNIVERSITY (WWW.HSU.EDU)	1100 HENDERSON ST., ARKADELPHIA, AR, 71999	1-870- 228-7333	Four Year Institution.
UNIVERSITY OF AR FOR MEDICAL SCIENCES (WWW.UAMS.EDU)	4301 W. MARKHAM STREET, LITTLE ROCK, AR, 72205	686-7000	The Colleges of Medicine, Pharmacy, Nursing, Health Related Professions, Public Health and the Graduate School. Four Year Institution.
UNIVERSITY OF CENTRAL AR (WWW.UCA.EDU)	201 DONAGHEY AVENUE, CONWAY, AR, 72035	450-5000	Four Year Institution.
ARKANSAS STATE UNIVERSITY (WWW.ADMISSIONS.ASTATE.EDU)	2105 AGGIE RD. JONESBORO, AR 72401	1-870- 972-2100	Four Year Institution.
UNIVERSITY OF AR MONTICELLO (WWW.UAMONT.EDU)	346 UNIVERSITY DR., MONTICELLO, AR	1-870- 460-1026	Four Year Institution.
UNIVERSITY AR FAYETTEVILLE	232 SILAS H.	1-479-	Four Year Institution.

(WWW.UARK.EDU)	HUNT HALL 1 UNIVERSITY OF ARKANSAS FAYETTEVILLE, AR	575-5346	
PULASKI TECH COLLEGE (WWW.UAPTC.EDU)	3000 WEST SCENIC DR., NLR, AR	812-2200	Two Year Institution.
SOUTHEAST AR COLLEGE (WWW.SEARK.EDU)	1900 HAZEL ST. PINE BLUFF, AR	1-870- 543-5900	Two Year Institution.
NATIONAL PARK COMMUNITY COLLEGE (WWW.NP.EDU)	101 COLLEGE DR., HOT SPRINGS NATIONAL PARK, AR 71913	760-4222	Two Year Institution.
SHORTER COLLEGE (WWW.SHORTERCOLLEGE.EDU)	604 N. LOCUST ST NLR, AR, 72114	374-6305	Two Years Private Liberal Arts Institution.
OUACHITA BAPTIST UNIVERSITY (WWW.OBU.EDU)	410 OUACHITA ST. ARKADELPHIA, AR, 71998	1-870- 245-5000	Private liberal arts college Four Year Institution.
AR BAPTIST COLLEGE (WWW.ARKANSASBAPTIST.EDU)	1621 DR. MLK JR. DR., LITTLE ROCK, AR 72202	877-643- 5390	Private liberal arts college Four Year Institution.
PHILANDER SMITH COLLEGE (WWW.PHILANDER.EDU)	900 W. DAISY L. GATSON BATES DR., LITTLE ROCK, AR, 72202	375-9845	Private liberal arts college Four Year Institution.
HENDRIX COLLEGE (WWW.HENDRIX.EDU)	1600 WASHINGTON AVENUE, CONWAY, AR, 72032	329-6811	Private liberal arts college Four Year Institution.
JOHN BROWN UNIVERSITY LITTLE ROCK CENTER (WWW.JB.EDU)	8114 CANTRELL RD. SUITE 250, LITTLE, ROCK, AR, 72227	771-9000	Private Christian Liberal Arts College. Graduate and online programs in business, counseling, higher education, and degree completions.



HOSPITALS/HEALTH CARE SERVICES

Agency/Organizations	Address	Phone	Services Provided
AMERICAN RED CROSS OF GREATER ARKANSAS BLOOD SERVICES	401 S. MONROE LITTLE ROCK, AR	614-4400	Provides safe storage and distribution of blood and blood products. CPR & First Aid classes available.
ARKANSAS CHILDREN'S HOSPITAL	1 CHILDREN'S WAY, LITTLE ROCK, AR 72202	364-1100	Provides health services to children.
ARKANSAS HEART HOSPITAL	1701 S. SHACKLEFORD RD.,	219-7000	Cardiac hospital that specializes in diagnosis and treatment of

	LITTLE ROCK, AR		cardiovascular disease.
ARKANSAS HOSPICE	14 PARKSTONE CIR. NORTH LITTLE ROCK, AR, 72116	748-3333	Provides assistance/education to staff, patients and their families.
ARKANSAS STATE HOSPITAL	305 SOUTH PALM ST. LITTLE ROCK, AR, 72205	686-9000	Treatment center for mentally ill citizens of Arkansas.
BAPTIST HEALTH REHABILITATION INSTITUTE OUTPATIENT THERAPY CENTER	9501 BAPTIST HEALTH DR., LITTLE ROCK, AR, 72205	202-7000	Provides healthcare.
BAPTIST HOSPICE – HOME HEALTH	11900 COLONEL GLENN ROAD SUITE 2000 LITTLE ROCK, AR	202-7480	Support system to meet the needs of hospice patients and their families.
BAPTIST MEMORIAL MEDICAL CENTER	3333 SPRINGHILL DR. NLR, AR	202-3000	Provides healthcare.
CARTI (CENTRAL ARKANSAS RADIATION THERAPY INSTITUTE) CANCER CENTER	8901 CARTI WAY, LITTLE ROCK, AR	906-3000	Treats cancer patients with radiation therapy.
CHENAL REHABILITATION & HEALTHCARE CENTER	3115 S. BOWMAN ROAD, LITTLE ROCK, AR, 72211	228-4848	Residential and transitional (sub-acute) care facility.
CHI ST. VINCENT COMMUNITY CLINIC FOR THE UNINSURED	2 ST. VINCENT CIRCLE LITTLE ROCK, AR	552-3000	Provides health-related and social needs to Little Rock, North Little Rock and surrounding communities.
CHI ST. VINCENT HEALTH SYSTEM (Infirmary)	2 ST. VINCENT CIRCLE LITTLE ROCK, AR	552-3551	Provides volunteer support to the hospital staff and the patients we serve.
NORTH CLINIC	2215 WILDWOOD SHERWOOD, AR	552-7121	
CHI ST. VINCENT – GARDNER MEMORIAL COMMUNITY CLINIC	1723 SCHAER STREET NLR, AR 72114	Could not find number	Walk-ins accepted must be present on Mondays between 7:00 am and 7:30 am. Doors open at 8:00 am. Serves uninsured ONLY.
CHI ST. VINCENT HEALTH - EAST CLINIC	2500 EAST 6 TH STREET LITTLE ROCK, AR 72202	552-4710	Open Monday thru Thursday, 8:00 am – 4:30 pm. Friday, 8:00 am – 12:00 pm, fees based on sliding scale, proof of income required \$30.00 co-pay. (Spanish interpreters Available)
HOSPICE HOME CARE	2200 S. BOWMAN LITTLE ROCK, AR, 72211	221-3338	Provides support to terminally ill persons and their families.
L.R. HEALTHCARE AND REHAB. CENTER	5720 W. MARKHAM LITTLE ROCK, AR	664-6200	Rehabilitates individuals to improve their quality of life.
NLR CITY HEALTH DEPARTMENT	2800 NORTH WILLOW STREET, NLR, AR 72026	791-8551	Open Monday thru Friday, 8:00am – 4:30pm, appointments required, proof of income and ID required. Low cost health screenings, minimum \$5.00 fee. testing immunizations, and

			referrals. No physicals.
OPEN HANDS CLINIC	3000 Springer Blvd. Little Rock, AR 72206	244-2121	Open Monday thru Friday 8am – 5pm. Appointments preferred & ID required, must be homeless, in shelter, or in transitional housing.
PULASKI COUNTY CENTRAL HEALTH UNIT	3915 WEST 8 TH STREET, LITTLE ROCK, AR 72204	280-3100	Open Monday thru Friday, 8:00am – 4:30pm, appointments preferred, proof of income and ID required. Free or low-cost health screenings, testing, and referrals. No physicals.
RIVER CITY MINISTRIES	1021 EAST WASHINGTON, NLR, AR 72114	376-6694	Food pantry open every day 9- 11:30 and 12-1. Breakfast is at 8 a.m. Lunch at 11:30 a.m. Open M-F 8:00a.m.-3:00 p.m. for showers
RONALD MCDONALD HOUSE CHARITIES	1501 W. 10 TH ST., LITTLE ROCK, AR	374-1956	Offers lodging to families with seriously ill hospitalized children.
ST. FRANCIS HOUSE	2701 SOUTH ELM STREET, LITTLE ROCK, AR 72204	664-5036	Prescription refills. Open Monday & Wednesday 9:00 – 11:00am. Will provide vouchers for prescriptions or refills from the bottles if refills are warranted. Must provide photo ID, Social Security card.
VETERANS ADMINISTRATION MEDICAL CENTER (CENTRAL ARKANSAS)	2200 FT. ROOTS DR. NLR, AR 4300 W 7 TH LITTLE ROCK, AR	257-1000	Provides health care to veterans.
WATERSHED	3701 SPRINGER BLVD., LITTLE ROCK, AR 72204	378-0176	Assistance with medications. Open Monday thru Friday 8:00am – 5:00pm. Call before coming to make sure funds are available. Appointments and referrals are preferred.

Mental Health Care Services/Treatment

Agency/Organizations	Address	Phone	Services Provided
ARKANSAS FAMILIES FIRST www.arfamiliesfirst.com	4004 McCain BLVD, SUITE 203, NLR, AR 72116	812-4268	Offers continuum care from birth to young adulthood. Services include: Infant & Young Child Developmental Evaluations, Behavior Modification & Parenting Support, Psychological & Psycho- educational Evaluations, Educational Advocacy, Psychiatric Evaluations & Medication Management, programs for teens and young adults, Career Testing and Counseling, Pre-adoption

			Evaluations and Counseling, Marriage and Family Therapy.
BAPTIST HEALTH BEHAVIORAL SERVICES	11401 INTERSTATE 30, EXIT 128 BAPTIST HEALTH SOUTHWEST LITTLE ROCK, AR 72209	202-7507	Open Monday- Friday 8am-5pm. Services offered are mental health counseling for children, adolescents, and adults, adult psychiatry, alcohol and drug dependency treatment.
BEHAVIORAL HEALTH SERVICES OF ARKANSAS www.bhsarkansas.org	10 CORPORATE HILL DRIVE, SUITE 330, LITTLE ROCK, AR 72205	954-7470	Open Monday-Thursday 8 am to 6 pm and Friday 8 am to 5 pm. Offers outpatient therapy for children, adolescents, families, adults, and seniors. Also provides therapy for Spanish-speaking clients.
BRIDGEWAY HOSPITAL www.thebridgeway.com	21 BRIDGEWAY ROAD, NLR, AR 72113	771-1500	Offers inpatient and outpatient services for children, adolescents, and adults undergoing behavioral, emotional, or addictive problems.
CENTERS FOR YOUTH AND FAMILIES www.centersforyouthandfamilies.net	6601 W. 12 TH , ST. LITTLE ROCK, AR 72204	666-8686	Outpatient clinic for youth 20 years old and under. (Bilingual Therapists are available, if needed.)
CHENAL FAMILY THERAPY www.chenaltherapy.com	10800 FINANCIAL CENTRE PKWY., STE 290, KIRKPATRICK PLAZA, LITTLE ROCK, AR 72211 FIRST SECURITY McCain BLDG. 2504 McCain BLVD., STE 200, NLR, AR 72116	781-2230	Services offered are individual, couples, family therapy, counseling, medication management, psychological testing, play therapy, intensives/crisis, and anger management. Also, online/ phone therapy.
FAMILY SERVICE AGENCY www.helpingfamilies.org	628 W. BROADWAY, SUITE 300, NLR, AR 72114	372-4242	Office hours are Monday – Friday 8am-5pm. Offers Behavioral Health services for Adolescent Substance Abuse, Divorce Recovery Education, Alcohol/Drug Abuse, Domestic Violence, Anger Management, Family Conflict, Anxiety, Relationship Problems, Couples Counseling, Stress Management, Depression. (Counselors are not able to interpret; client must be seen by a clinician who is able to interpret.)
LITTLE ROCK COMMUNITY MENTAL HEALTH CENTER www.lrcmhc.com	1100 N. UNIVERSITY EVERGREEN PLACE SUITE 200, 201 & 240 LITTLE ROCK, AR 72205	686-9300	Mental health counseling, there is a sliding scale fee, financial interview and triage will be done over the phone, Monday thru Friday 8:00 am – 5:00 pm.
Methodist Family Health –	1600 ALDERSGATE	661-0720	Offers outpatient services and

<p>COUNSELING CLINICS www.methodistfamily.org</p>	<p>ROAD, SUITE 100B, LITTLE ROCK, AR 72205</p>	<p>Mon - Fri 8am-5pm 803-3388 (Hospital & After-Hours)</p>	<p>treatment for children (ages 3 and up), adolescent, and family. Services include Individual, family and group counseling services, Registered play therapists, Grief and trauma specialists, Psychological testing including Autism Spectrum Disorders, Medication consultation and management, Board certified psychiatrists and child psychiatrists, Case management, Behavior management planning and techniques, Parent support and education, School-based counseling services, Access to other inpatient, outpatient, and residential programs within the Methodist Family Health Continuum of Care (Spanish interpreters are available, if needed.)</p>
<p>PINNACLE POINTE BEHAVIORAL HEALTHCARE SYSTEM WWW.PinnaclePointeHospital.com</p>	<p>(INPATIENT) 11501 FINANCIAL CENTRE PARKWAY, LITTLE ROCK, AR 72211 (OUTPATIENT) 400 HARDIN ROAD, SUITE 150, LITTLE ROCK, AR 72211</p>	<p>223-3322 603-2147</p>	<p>Provides acute psychiatric services to children age 5-17, as well as adults, ages 18 and up. Outpatient services to children, adolescents, and adults. Other children and adolescents' services are acute inpatient program, residential inpatient program, partial hospitalization program, outpatient, and school-based services. (Spanish interpreters available for inpatient and outpatient.)</p>
<p>UAMS HEALTH – PSYCHIATRIC RESEARCH INSTITUTE www.psychiatry.uams.edu WALKER FAMILY CLINIC</p>	<p>4224 SHUFFIELD DRIVE, LITTLE ROCK, AR 72205</p>	<p>526-8100 526-8200 (Appointments)</p>	<p>Outpatient psychiatric services offered to adults, ages 18 and up. Services include: psychiatric evaluation, medication management, psychological testing, neuropsychological testing, individual, family and marital/couples and group psychotherapy. Hours are Monday – Friday 8am-4:30pm. UAMS PRI has a Child Diagnostic Unit for children ages 2-12. (Spanish interpreters are available, if needed.)</p>

YOUTH HOME, INC. www.youthhome.org	20400 COLONEL GLENN ROAD, LITTLE ROCK, AR 72210	821-5500	Provides outpatient services through Behavioral Health Services of Arkansas, day treatment, community residential treatment, intensive psychiatric treatment. Specialty tracks services for reactive attachment disorder, safe solutions track for children of high risk of victimization and trauma, and the seven challenges for substance abuse.
---	--	----------	---



DENTAL PROVIDER'S LIST



Agency/Organization	Address	Phone	Services Provided
KITCHEN'S PEDIATRIC DENTISTRY DR. C. ANDY KITCHEN DDS, PA	14114 TAYLOR LOOP DR LITTLE ROCK, AR 72223	868-3331	Dental Services for children.
LEAP KIDS PEDIATRIC DENTAL	300 RODNEY PARHAM SUITE 3 LITTLE ROCK, AR	224-4799	Dental Services Se habla español.
	9100 GEYER SPRINGS RD., LITTLE ROCK, AR 72209	565-0444	
LR FAMILY DENTAL CARE	4220 N. RODNEY PARHAM SUITE 200 LITTLE ROCK, AR	708-4509	Dental Services.
KOOL SMILES CLINIC	2000 S. UNIVERSITY AVE., LITTLE ROCK, AR	588-7406	Dental Services Se habla español.
DR. BRYAN K. ANGEL DDS, PA	9100 GEYER SPRING RD LITTLE ROCK, AR	565-0444	Dental Services Se habla Español.
OCEAN DENTAL DDS	3024 S. UNIVERSITY LITTLE ROCK, AR	565-0606	Dental Services.
PERSHING DENTAL CLINIC DDS	520 W. PERSHING BLVD. SUITE #C, NLR, AR, 72114	753-2800	Dental Services Se habla Español.
NORTH LITTLE ROCK PEDIATRIC DENTAL GROUP DDS, PA	4605 FAIRWAY AVE., NLR, AR, 72216	771-2990	Dental Services for children.
ST. VINCENT CLINIC EAST DDS	2500 E. 6 TH STREET LITTLE ROCK, AR	552-4710	Dental Services. Sliding scale fee.
FAMILY DENTAL CLINIC: DR. LARRY M. HENDERSON DDS	3006 E. KHIEL AVENUE SHERWOOD, AR	835-0444	Dental Services.
SHEPHERDS HOPE NEIGHBORHOOD HEALTH CENTER	2404 TYLER STREET LITTLE ROCK, AR 72204	614-9523	By appointment only, serving 72204 and 72209 zip codes. Proof of residency required. Tuesday

			evenings 5:30pm-8:30pm Se habla Español.
DR. ANGELA GRAY FAMILY DENISTRY	2650 JOHN HARDEN DR. #G, JACKSONVILLE, AR	982-4729	Dental Services for Adults and children.
ARKANSAS PEDIATRIC DENISTRY	5905 W. 12 TH ST. LITTLE ROCK, AR	812-3109	Dental Services for children.



PRIMARY CARE PHYSICIANS LIST

Agency/Organization	Address	Phone	Services Provided
ARKANSAS PEDIATRIC CLINIC DOCTORS BUILDING – DR. ANTHONY JOHNSON, MD DR. EUGENE LU, MD	500 SOUTH UNIVERSITY AVE., #200, LITTLE ROCK, AR	664-4117	Health Services. Specializes in Maternal-Fetal Medicine Specialized Pediatric
CHI ST. VINCENT PRIMARY & CONVENIENT CARE – DR. VINCENT CALDERON, MD	4242 SOUTH UNIVERSITY LITTLE ROCK, AR	562-4838	Health Services. Specialized Pediatric
CHI ST. VINCENT PRIMARY CARE	1110 WEST MAIN ST. JACKSONVILLE, AR	982-2108	Health Services.
JACKSONVILLE MEDICAL CLINIC	1300 BRADEN P. O. BOX 309 JACKSONVILLE, AR	985-5900	Health Services.
LITTLE ROCK CHILDREN’S CLINIC - SUSAN KEATHLEY, MD	9600 BAPTIST HEALTH DR., LITTLE ROCK, AR	227-6727	Health Services. Pediatrician.
AR PRIMARY CARE CLINIC, P.A. - DEREK LEWIS, MD	6209 WEST 12 TH STREET, LITTLE ROCK, AR	663-5221	Health Services.
ARKANSAS CHILDREN’S HOSPITAL	1 CHILDREN’S WAY, LITTLE ROCK, AR	364-1100	Health Services.
THE PEDIATRIC CLINIC	203B PLAZA BLVD., CABOT, AR, 72023	843-0068	Health Services.
SPRINGHILL MEDICAL PLAZA	3401 SPRINGHILL DR., STE 245, NLR, AR, 72117	758-1530	Health Services.

SHERWOOD MEDICAL CLINIC	1308 KIEHL AVENUE SHERWOOD, AR, 72120	835-0703	Health Services.
19TH MEDICAL GROUP - LITTLE ROCK AIR FORCE BASE CLINIC	1090 ARNOLD DR., LITTLE ROCK AFB, AR, 72099	987-8811	Health Services.
DR. LAURIE A. BATTLES, MD	3401 SPRINGHILL DRIVE STE 245, NLR, AR	758-1530	Health Services.

DISABILITIES COMMUNITY RESOURCES

Agency/Organization	Address	Phone	Services Provided
LRSD EARLY CHILDHOOD SPECIAL SERVICES PROGRAM Contact: Thelma Jasper	2700 S. MAIN STREET LITTLE ROCK, AR 72206	447-6100	Disability Services.
THERATEAM REHAB SERVICES - Reeda Williamson, DIR.	2305 SPRINGHILL RD. SUITE #5, BRYANT, AR 72019	847-2555	Disability Services.
THERAPY PROVIDER	6705 WEST 12 TH ST. STE 3, LITTLE ROCK, AR	603-9976	Disability Services.
PEDIATRIC THERAPY SERVICES OF LITTLE ROCK - Contact: Lee Ann Brosh	11517 KANIS ROAD LITTLE ROCK, AR	993-7171	Speech, occupational and physical therapy.
AAA THERAPY CARE, INC. Contact: Debbie Coleman	527 HIGHWAY 62 E SALEM, AR, 72576	1-870-895-2720	Disability Services.

NON – EMERGENCY ALTERNATE CARE SETTINGS

PULASKI COUNTY HEALTH UNITS

Agency/Organization	Address	Phone	Services Provided
12TH STREET HEALTH AND WELLNESS CENTER	4010 WEST 12 TH STREET, LITTLE ROCK, AR 72204	614-2492	Open Monday and Wednesday 4pm-8pm. Free medical support, chronic disease (hypertension, diabetes, and cholesterol). Medical counseling and disease prevention. Dental and audiology screenings. (Spanish Interpreters are available.)
ACH GENERAL	GPC STURGIS	364-1202	Clinic Hours M-F 8am-5pm &

PEDIATRIC CLINIC	BUILDING, 1 ST FLOOR - MAIN CAMPUS LITTLE ROCK, AR		After Hours Clinic Hours 5pm-8:45pm. Open weekends 9am 7:45pm.
CATHOLIC DIOCESE - WESTSIDE FREE MEDICAL CLINIC	2415 NORTH TYLER STREET, LITTLE ROCK, AR 72207	664-0340 X-356 ENGLISH X-335 SPANISH	Provides basic health screening and limited pharmacy. Open Wednesday evenings.
CHI ST. VINCENT HEALTH – EAST CLINIC	2500 E 6 TH STREET LITTLE ROCK, AR	552-4710	Mon.-Thurs. 8am-4:30pm & Fri. 8am-noon. Fees based on sliding scale. Proof of income required.
COLLEGE STATION CLINIC	4206 FRAZIER PIKE COLLEGE STATION, AR	490-2440	8am–5pm M-F, Thursday 8am-noon. Walk-ins Welcome.
ESPERANZA “HOPE” NEIGHBORHOOD CLINIC (SPANISH)	2 ND BAPTIST CHURCH 6111 WEST 83 RD STREET, LITTLE ROCK, AR 72209	562-1114	Primary care clinic, open Thursday, 5:15am – 8:00pm, closed the 5th Thursday of each month, primarily serving clients in the 72209 Zip code area. Entrance around the back. By appointment ONLY . \$5.00 co pay. Have Spanish interpreters available.
HARMONY HEALTH CLINIC	201 EAST ROOSEBELT ROAD, LITTLE ROCK, AR 72206	375-4400	Open Monday thru– Friday, 9:00am - 1:00pm to pick-up and return application packet. Appointments required to see doctors. NO WALK-INS.
JACKSONVILLE HEALTH UNIT	3000 NORTH FIRST ST. JACKSONVILLE, AR	982-7477	8am-4:30pm M-F Variety of programs – call for additional information.
LA CLINICA SAMARITANO	7002 BASELINE ROAD LITTLE ROCK, AR	565-6155	Open the 1 st and 3 rd Tuesday every month at 5pm – 8:30pm. \$10 per visit. Interpreters available.
NORTH LITTLE ROCK HEALTH UNIT	2800 WILLOW ST., NLR, AR	791-8551	8:00am-4:30pm M-F Appointments Required.
PULASKI COUNTY: CENTRAL HEALTH UNIT	3915 WEST 8 TH STREET LITTLE ROCK, AR	280-3100	Appointment required. 8:00am–4:30pm M-F.
CENTRAL STD CLINIC		280-3125	
CENTRAL FAMILY PLANNING CLINIC		280-3340	
CENTRAL TB CLINIC		280-3111	
PULASKI COUNTY SOUTHWEST HEALTH UNIT	8901 DAILEY DR. LITTLE ROCK, AR	565-9311	8:00am-4:30pm M-F Appointments Required.
UAMS CLINIC APPOINTMENTS	4301 WEST MARKHAM LITTLE ROCK, AR	686-8000	7:30am-5:00pm M-F Appointments Required.
SHEPHERD’S HOPE MEDICAL CLINIC (FREE)	2415 FAIR PARK BLVD. LITTLE ROCK, AR 72204	663-9407	. Open Thursday 5:30pm – 9pm for primary care and diabetic clinic. By Appointment Only. Serving 72204 zip code

			area. Proof of residency required. Services are free but families are asked for a \$5 contribution for each visit. (Spanish Interpreters available.)
--	--	--	--

PHARMACIES (CENTRAL LITTLE ROCK)

Agency/Organization	Address	Phone	Services Provided
KROGER PHARMACY JACKSONVILLE	103 GREGORY PLACE JACKSONVILLE, AR	985-0822	All of your Prescriptions Needs.
KROGER PHARMACY NORTH LITTLE ROCK	2509 McCain Blvd., NLR, AR, 72116	758-9307	All of your Prescriptions Needs.
	4401 CAMP ROBINSSON RD., NLR, AR, 72118	758-6360	
	6929 J.F.K. BLVD., NLR, AR, 72216	835-6530	
KROGER PHARMACY LITTLE ROCK	6420 COLONEL GLENN RD., LITTLE ROCK, AR	565-0188	All of your Prescriptions Needs.
	1100 E. ROOSEVELT RD., LITTLE ROCK, AR	375-5645	
	8824 GEYER SPRING RD LITTLE ROCK, AR	565-7584	
KROGER PHARMACY (24-HRS) LITTLE ROCK	8415 W. MARKHAM ST. LITTLE ROCK, AR	227-8200	All of your Prescriptions Needs.
WAL-MART PHARMACY JACKSONVILLE	2000 JOHN HARDEN DR. JACKSONVILLE, AR	982-3357	All of your Prescriptions Needs.
WALMART PHARMACY LITTLE ROCK	700 S. BOWMAN ROAD LITTLE ROCK, AR	221-0096	All of your Prescriptions Needs.
	8801 BASELINE RD., LITTLE ROCK, AR	565-1164	
	2700 S. SHACKLEFORD RD., LITTLE ROCK, AR	221-0096	
WALMART PHARMACY NORTH LITTLE ROCK	12001 MAUMELLLE BLVD., NLR, AR, 72113	851-6459	All of your Prescriptions Needs.
	4450 E. MCCAIN BLVD., NLR, AR, 72117	945-9400	
WALGREENS PHARMACY (24HRS)	4823 JOHN F. KENNEDY BLVD., NLR, AR	771-1971	All of your Prescriptions Needs.

NORTH LITTLE ROCK			
WALGREENS PHARMACY (24HRS) LITTLE ROCK	111 N. BOWMAN ROAD LITTLE ROCK, AR	225-0703	All of your Prescriptions Needs.
WALGREENS PHARMACY LITTLE ROCK	5917 BASELINE ROAD LITTLE ROCK, AR	565-7844	All of your Prescriptions Needs.
SAMS CLUB NORTH LITTLE ROCK	5600 LANDERS ROAD NLR, AR	955-9451	All of your Prescriptions Needs.
SAMS CLUB LITTLE ROCK	900 S. BOWMAN ROAD LITTLE ROCK, AR	219-0283	All of your Prescriptions Needs.



HEALTH EDUCATION

Agency/Organization	Address	Phone	Services Provided
ALZHEIMER'S ARKANSAS PROGRAMS & SERVICES	201 MARKHAM CENTRE DRIVE, LITTLE ROCK, AR 72205	224-0021	Supports patients and their families and research. Open Monday-Friday 8:30am – 4:30pm
ALZHEIMER'S ASSOCIATION OF CENTRAL ARKANSAS.	10201 W. MARKHAM ST., SUITE 100 LITTLE ROCK, AR	265-0027	To respond to the needs of the community.
AMERICAN CANCER SOCIETY	901 N. UNIVERSITY LITTLE ROCK, AR	603-5200	Supports patients and their families, provide information. M-F 8AM-5PM
AMERICAN DIABETES ASSOCIATION	320 EXECUTIVE CT. #104, LITTLE ROCK, AR	221-7444	Cures and prevents diabetes, and to improve the lives of those affected by diabetes.
AMERICAN HEART ASSOCIATION	909 W. 2 ND STREET LITTLE ROCK, AR	375-9148	Provides prevention and wellness programs, CPR training and research.
AMERICAN RED CROSS	401 S. MONROE LITTLE ROCK, AR	614-4400	Provides disaster relief, emergency help, CPR, first aid, & swimming classes. M- Thurs 9:30-5:30; F-Sat 7:30-2:30.
ARKANSAS AIDS FOUNDATION	523 S. LOUISIANA SUITE #303 LITTLE ROCK, AR, 72201	374-6544	Provides free AIDS testing and speakers' bureau and provide case management to persons who are HIV positive.
ARKANSAS PROSTATE CANCER FOUNDATION	910 N. GRANT ST SUITE 1-A LITTLE ROCK, AR, 72207	379-8027	To raise the awareness of the high risk of prostate cancer, to facilitate early diagnosis, and to improve treatment.
ARKANSAS RESPIRATORY HEALTH ASSOCIATION	211 NATIONAL RESOURCES DRIVE, LITTLE ROCK, AR	224-5864	Fight lung disease through research, education, prevention and advocacy.
ARORA (ARKANSAS REGIONAL ORGAN RECOVERY AGENCY)	1701 ALDRSGATE RD., SUITE 4, LITTLE ROCK, AR, 72205	907-9150	Recovers organs and tissues for transplant.

FAMILY SERVICE AGENCY	628 W. BROADWAY SUITE 300 NLR, AR, 72114	372-4242	To build strong, caring communities by providing quality services that promote and enhance a healthy life. Mon-Thurs 8am-6pm; Fri- 8am-5pm; sat- 8am- noon
MARCH OF DIMES	1501 N. PIERCE LITTLE ROCK, AR	663-3100	To improve the health of babies by preventing birth defects and infant mortality.
MUSCULAR DYSTROPHY ASSOCIATION	204 EXECUTIVE CT. SUITE 208 LITTLE ROCK, AR	227-7098	Conquering neuromuscular diseases that affect more than a million Americans.
PLANNED PARENTHOOD	5921 W. 12 TH ST., SUITE C, LITTLE ROCK, AR	666-7526	Provides reproductive health and family planning services, including prenatal care, anonymous HIV testing, and vasectomies. Mon- 11am-7pm; Tues-Thurs 9am-5pm; Fri- 8am-4pm
YWCA ENCORE PLUS @ NATIONAL PARK MEDICAL CENTER	1910 MALVERN AVENUE, HOT SPRINGS, AR, 71901	663-8406	Fight breast and cervical cancer through education, prevention.

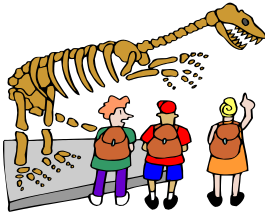


LIBRARIES

Agency/Organization	Address	Phone	Services Provided
MAIN LIBRARY	100 S. ROCK STREET LITTLE ROCK, AR, 72201	918-3000	Offers patrons thousands of books and audiovisual items for children and adults. It is also home to the Butler Center for Arkansas Studies and the Sturgis Center for Technology Training. Other features include wireless Internet access, on-site public computer classes and several public meeting rooms. Hours: Mon-Thurs 9am-8pm; Fri-Sat 9am-6pm; Sun 1pm-5pm
WILLIAM F. LAMAN PUBLIC LIBRARY	2801 ORANGE STREET NLR, AR	758-1720	Offers classes, lectures, book clubs, internet access, a genealogical section, meeting rooms and a children's library.
ARGENTA BRANCH	420 MAIN STREET NLR, AR	687-1061	Laman: Mon-Thurs 9-8; Fri-Sat 9-5 Argenta: Mon-Fri 9-6; Sat 9-1
ADOLPHINE FLETCHER TERRY LIBRARY	2015 NAPA VALLEY DRIVE	228-0129	Offers patrons thousands of books and audio/visual items for adults

	LITTLE ROCK, AR		and children, enclosed study rooms and public Internet access. The Terry Library also offers a variety of monthly programs for children and adults. Hours: Mon, Wed, Thurs 9am-8pm; Tues, Fri, Sat 9am-6pm
AMY SANDERS LIBRARY	31 SHELBY DRIVE SHERWOOD, AR, 72120	835-7756	In addition to an array of books and audio/visual equipment, the library offers numerous children's programs. Hours: Mon, Wed, Fri, Sat 9:30-6pm; Tues, Thurs 9:30-8pm
DEE BROWN LIBRARY	6325 BASELINE ROAD LITTLE ROCK, AR, 72209	568-7494	Offers patrons a wide variety of adult and children's books as well as CDs, DVDs and videocassettes. Provides access to public study rooms, a meeting room and an outside deck and boardwalk that lead from Baseline Road to the library. Hours: Mon, Tues, Thurs 10am-8pm; Wed, Fri, Sat 10am-6pm
JOHN GOULD FLETCHER LIBRARY	823 NORTH BUCHANAN STREET LITTLE ROCK, AR, 72205	663-5457	Offers patrons a selection of an adult and children's books as well as CDs, DVDs and video-cassettes. Provides access to public meeting rooms and programs for all ages. Hours: Mon-Wed 9am-8pm; Thurs-Sat 9am-6pm
MAUMELLE LIBRARY	10 LAKE POINTE DR. MAUMELLE, AR, 72113	851-2551	Offers patrons access to public computers, a meeting room, and a complete collection of books and audio/visual material. Hours: Mon, Tues, Thurs 10am-8pm; Wed, Fri, Sat 10am-6pm
ESTER DEWITT NIXON LIBRARY	703 W. MAIN STREET JACKSONVILLE, AR, 72026	457-5038	Offers patrons a variety of public programs for adults and children as well as public internet access, books and AV material. Hours: Tues, Thurs 9:30-8pm; Mon, Wed, Fri, Sat 9:30-6pm
SUE COWAN WILLIAMS LIBRARY	1800 CHESTER STREET LITTLE ROCK, AR, 72206	376-4282	Offers patrons a wide selection of books and audio/visual items, public internet access and a public meeting room. Hours: Tues, Thurs 10am-8pm; Mon, Wed, Fri, Sat 10am-6pm
SIDNEY S. MCMATH LIBRARY	2100 JOHN BARROW DRIVE LITTLE ROCK, AR, 72204	225-0066	Offers patrons thousands of books and audio/visual items as well as a stocked pond and a nature trail that wind around the 10-acre site. Hours: Mon-Wed 10am-8pm; Thurs-Sat 10am-6pm
ROOSEVELT	38 RAHLING CIRCLE	821-3060	Offers patrons more than 30,000

THOMPSON LIBRARY	LITTLE ROCK, AR, 72223		books, magazine and audiovisual items. Public meeting rooms, a state of the art audiovisual system, activity areas for children, study rooms, a dozen public Computers and wireless Internet access. Hours: Mon, Tues, Thurs 9am-8pm; Wed, Fri, Sat 9am-6pm
HILLARY RODHAM CLINTON CHILDREN'S LIBRARY & LEARNING CENTER	4800 W. 10 th ST LITTLE ROCK, AR 72204	978-3870	Offers patrons more than 21,000 books, DVD's and CD's. Vibrant Happy Place for families with children to come for hands on learning and enrichment. Activities geared toward preschool, elementary, and middle school students. Offers teaching kitchen, 165 seat theater, greenhouse and teaching garden, walking paths, computer lab and laptops available for checkout. Early Childhood computers and iPads with literacy apps are available for use. Hours of operation: Mon-Sat 9am-6pm. Sun: 1pm-5pm



ARTS/MUSEUMS



Agency/Organization	Address	Phone	Services Provided
ARKANSAS ARTS CENTER	501 E. 9 TH ST. LITTLE ROCK, AR 72202	372-4000	Creates, stimulates, performs and provides visual and performing arts.
ARKANSAS ACADEMY OF DANCE	10301 N. RODNEY PARHAM, LITTLE ROCK, AR, 72227	501-786- 0784	To present, promote and enhance dance forms in the state of Arkansas.
ARKANSAS HISTORIC PRESERVATION PROGRAM	110 NORTH ST., LITTLE ROCK, AR, 72201	324-9880	Identifies and protects Arkansas' historic resources.
ARKANSAS REPERTORY THEATRE	601 MAIN LITTLE ROCK, AR 72201	378-0405	Entertains and challenges audiences, forum for artists, educational outreach.
HISTORIC ARKANSAS MUSEUM	200 E. 3 RD STREET LITTLE ROCK, AR 72201	324-9351	To communicate history of Arkansas through education and enjoyment.
HISTORIC PRESERVATION ALLIANCE	201 W. FOURTH ST., NORTH LITTLE ROCK, AR, 72114	372-4757	Promotes and advocates the preservation of Arkansas' unique cultural heritage.

OLD STATE HOUSE MUSEUM	300 W. MARKHAM LITTLE ROCK, AR, 72201	324-9685	Presents exhibits, provides programs and offers learning opportunities in the humanities.
LR CENTRAL HIGH SCHOOL NATIONAL HISTORIC SITE	2120 DAISY L. GATSON BATES DRIVE LITTLE ROCK, AR 72202	374-1957	3,000 exhibits about the 1957 desegregation crisis and its role in the larger civil rights movements in the united states.
RIVER MARKET BOOKS & GIFTS	120 RIVER MARKET AVE., LITTLE ROCK, AR, 72201	918-3093	The "gently read" book store of the Central AR Library System offers a wide selection of new/used books, collectible books and literary gift items.
ARKANSAS STUDIES INSTITUTE GALLERIES	401 PRESIDENT CLINTON AVE. LITTLE ROCK, AR 72201	320-5000	Arkansas artists' paintings, sculptures, woodwork, ceramics and art quilts are displayed.
JACKSONVILLE MUSEUM OF MILITARY HISTORY	100 Veterans Circle JACKSONVILLE, AR 72076	241-1943	To foster an appreciation that the freedoms we enjoy are not to be taken for granted.
USS RAZORBACK SUBMARINE - ARKANSAS INLAND MARITIME MUSEUM IN THE NORTH LITTLE ROCK RIVERFRONT PARK DOWN ON THE AR RIVER	120 RIVERFRONT PARK DRIVE NLR, AR 72114	371-8320	Tour the USS Razorback commissioned in 1944. The submarine was the last operational submarine present in Tokyo Bay to take part in the formal surrender of Japan on Sept. 2, 1945, officially ending WWII.
MUSEUM OF DISCOVERY	500 PRESIDENT CLINTON AVE. LITTLE ROCK, AR 72201	396-7050	The Museum of Discovery is Arkansas's premier science and technology center, and our mission to ignite and fuel a passion for science, technology, engineering, arts and math through dynamic, interactive experiences. Hours of Operation: Tue- Sat: 9am - 5pm, Sun: 1pm-5pm, Mon: 9am-5pm when school is not in session. SNAP benefit recipients can show his or her EBT card and valid state ID to receive \$2 general admission for the card holder and 5 additional people.



COMMUNITY & RECREATION CENTERS



Agency/Organization	Address	Phone	Services Provided
BOYS AND GIRLS CLUBS OF CENTRAL ARKANSAS (JACKSONVILLE)	1 BOYS CLUB DRIVE JACKSONVILLE, AR 72076	982-4316	To provide constructive activities in arts, education, recreation and sports.
BOYS AND GIRLS CLUBS OF CENTRAL ARKANSAS (LITTLE ROCK)	(PENICK UNIT) 1201 LEISURE PLACE 72209	666-5494	Purpose: Provides leisure time, educational, social, recreational and physical activities to youth.
	(MITCHELL UNIT) 3107 W. CAPITOL	666-9486	
	(THRASHER UNIT) 3301 S. STATE ST. 72206	376-2988	
	(WHETSTONE UNIT) 46 HARROW DR 72209	562-4082	
NORTH LITTLE ROCK BOYS AND GIRLS CLUB	HAMILTON 600 N. PALM STREET NLR, AR	945-3162	Provides a variety of athletic programs including basketball, track, swimming, tumbling, gym hockey, volleyball, and cheerleading. Educational programs include gardening, visual arts, ceramics, music, and literature. Substance abuse and sex education program are provided. Dental and general medical check ups are provided by volunteer physicians and dentists.
	ROSE CITY COMMUNITY CENTER 400 ROSE LANE NLR, AR 72117	945-8036	
	WETHERINGTON 1212 JIM WETHERINGTON PLACE, NLR, AR 72114	374-0309	
PATRICK HENRY HAYES SENIOR CENTER	401 W. PERISHING BLVD. NLR, AR 72114	975-4297	Seniors exercise classes, both land and aquatic, as well as the use of a wide range of exercise equipment.
NORTH LITTLE ROCK COMMUNITY CENTER	2700 WILLOW STREET NLR, AR, 72114	791-8541	Recreational activities for children, ages 5 to 18, including basketball and drill team. Computer and instructor led tutoring available to children and adults. A bible study and mentoring program is available on Sunday for children and adults.
GLENVIEW COMMUNITY CENTER	4800 E. 19 TH STREET NLR, AR, 72117	945-2921	To provide constructive activities in arts, education, recreation and sports.
DUNBAR COMMUNITY CENTER	1001 WEST 16 TH ST. LITTLE ROCK, AR, 72202	376-1084	Recreational Center, Community Center and Youth Activities. Provides youth an opportunity to participate in a structured after-school program with tutors and daily activities. Participants have the opportunity to do homework and socialize with peers in a safe and supervised environment.
SOUTHWEST	6401 BASELINE ROAD	918-3975	Provides youth with

COMMUNITY CENTER	LITTLE ROCK, AR, 72209		homework/tutoring, arts & crafts, recreational activities, sporting events, and other activities.
STEPHENS COMMUNITY CENTER	3720 WEST 18 TH STREET LITTLE ROCK, AR	603-9974	Youth participants will be in a structured program designed to assist with homework in each subject, daily activities include games, tutoring, athletics, and free play fun. Space is limited to the first 80 participants.
OTTENTHEIMER THERAPEUTIC RECREATION CENTER	7201 DAHLIA DRIVE LITTLE ROCK, AR, 72209	570-1131	Designed to bring about emotional, social, physical and other positive changes in individuals with disabilities. It also seeks to help individuals increase independence and develop skills for improved quality of life. Come and make new friends while enjoying a positive leisure experience.



PARKS & RECREATION



Agency/Organization	Address	Phone	Services Provided
LITTLE ROCK PARKS & RECREATION	500 W. MARKHAM ST. SUITE 108 LITTLE ROCK, AR	371-4770	Outdoor fun and activities.
BURNS PARK	EXIT 150 NLR, AR, 72118	791-8538	Playgrounds, two golf courses (disc and miniature). A waterslide, an amusement park, a softball field, tennis and racquetball courts and even a camping area.
BOYLE PARK	2000 BOYLE PARK RD LITTLE ROCK, AR 72204	371-4770	Biking and walking trails and some playground equipment. Almost everyday in the summer you see families fishing and playing there.
NORTH LITTLE ROCK PARKS & RECREATION	2700 WILLOW ST. NLR, AR, 72114	791-8538	Outdoor fun and activities.
EAST LITTLE ROCK COMMUNITY CENTER	2500 E. 6 TH ST. LITTLE ROCK, AR	374-2881	Outdoor fun and activities.
SHERMAN PARK COMMUNITY CENTER	624 N. BEECH ST. NLR, AR, 72114	340-5373	Outdoor fun and activities.
WAR MEMORIAL PARK	5101 W. MARKHAM STREET, LITTLE ROCK, AR, 72205	663-0854	Facilities for golf, picnic, fishing and playground equipment for kids. Close to the LR Zoo and War Memorial Fitness Center (which has a swimming pool).
ALLSOPP PARK	3700 CEDAR HILL	371-4770	Playground, a baseball field, tennis

	LITTLE ROCK, AR 72202		courts and hiking trails. A great place to bring the kids.
MURRY PARK	5900 REBSAMEN PARK ROAD LITTLE ROCK, AR	371-4770	Great for walking with pets and Kids, has eight pavilions, three soccer fields, two playgrounds and a boat dock; also, a nice place to go fishing.
McARTHUR PARK	601 E. 9 TH STREET LITTLE ROCK, AR 72201	371-4770	A great picnic spot. The main draw of the park is the Arkansas Arts Center.
EMERALD PARK	2200 FORT ROOTS DRIVE NLR, AR 72118	791-8538	It is a bit more natural than Burns Park with 135 acres, a one mile walking trail and four scenic overlooks to the Arkansas River.
PINNACLE MOUNTAIN STATE PARK	11901 PINNACLE VALLEY RD. ROLAND, AR 72135	868-5806	A great place with camping, hiking and picnicking areas. It's also good for bird and wildlife watching.
RIVERFRONT PARK	OTTENHEIMER PLAZA LITTLE ROCK, AR 72201	371-4770	Home of River Fest and the Riverfront Amphitheatre. It has many nice walkways and paths and a history walk area where you can learn about Little Rock.
KANIS PARK	820 SOUTH RODNEY PARKHAM ROAD LITTLE ROCK, AR 72205	371-4770	Softball field, playgrounds, bike trails, jogging trails, basketball, tennis, picnic tables, and pavilions. It is a favorite with skateboarders in Little Rock.
BIG ROCK MINI GOLF & FUN PARK	11411 BASELINE ROAD, LITTLE ROCK, AR, 72209	455-3750	Amusement Parks, Fun & Games.
MAGIC SPRING & CRYSTAL FALLS	1701 EAST GRAND AVE., HOT SPRINGS, AR, 71901	624-0100	Amusement Parks, Fun & Games.
WILD RIVER COUNTRY	6820 CRYSTAL HILL ROAD, NLR, AR, 72118	753-8600	Water Park.
LITTLE ROCK ZOO	#1 ZOO DRIVE LITTLE ROCK, AR 72205	661-7200	A model for others in education, animal care and response to the community needs; providing visitors with recreational, educational and cultural experience.
ARKANSAS ALLIGATOR FARM & PETTING ZOO	847 WHITTINGTON AVE., HOT SPRINGS NATIONAL PARK, AR, 71901	623-6172	Animals and Petting Zoo.

YOUTH

Agency/Organization	Address	Phone	Services Provided
ARKANSAS NATIONAL GUARD YOUTH	CAMP J.T. ROBINSON #16414	1-800-814-8453	Preventive at risk youth program. The program targets

CHALLENGE PROGRAM	NLR, AR 72199		unemployed, drug-free and no felony convictions and 16 to 18 years of age. You must not be older than 18 upon entry.
BOY SCOUTS OF AMERICA, QUAPAW AREA COUNCIL	3220 CANTRELL RD. LITTLE ROCK, AR 72202	664-4780	Provides programs for youth and promotes character development.
CENTERS FOR YOUTH AND FAMILIES	6501 WEST 12 TH LITTLE ROCK, AR, 72204	666-8686	Provides education, prevention, intervention, and treatment to promote emotional and social wellness.
CITY YEAR	610 PRESIDENT CLINTON AVENUE STE 200, LITTLE ROCK, AR, 72201	707-1400	Unites young people of all backgrounds, ages 17-24, for a demanding year of community service and leadership development.
CRADLE CARE	1002 W. 11 TH STREET LITTLE ROCK, AR, 72202 & 2400 PRINCE STREET CONWAY, AR 72034	372-7857 730-0017	Educational services, healthcare and social assistance for teens who became pregnant or have a child.
DHS-PLACEMENT & RESIDENTIAL LICENSING- Pulaski South	1105 MLK DRIVE LITTLE ROCK, AR	501-682-9200	"Manages licensing for residential child care facilities, emergency residential child care facilities, psychiatric residential treatment centers, sexual rehabilitative programs, independent living programs; adoption, foster care, therapeutic foster care and residential placement agency licenses."
FIRST TEE OF ARKANSAS www.Thefirstteelittlerock.org	1 FIRST TEE WAY LITTLE ROCK, AR 72204	562-4653	To expose children to nine core values through the game of golf.
GIRL SCOUTS OF OUACHITA COUNCIL	11311 ARCADE DR., LR, AR 72112	1-800-632-6894	Inspires girls to become happy and resourceful citizens.
JUNIOR ACHIEVEMENT OF ARKANSAS	1501 N. UNIVERSITY SUITE 670 LITTLE ROCK, AR 72207	280-9118	Delivers economic and business education to school children.
MAKE-A-WISH FOUNDATION	320 EXECUTIVE COURT #101, LITTLE ROCK, AR 72205	376-9474	Insures that wishes are granted to children who are battling life-threatening illnesses.
OUR CLUB	201 SOUTH BROADWAY SUITE 220 LITTLE ROCK, AR	340-8250	To build and coordinate comprehensive prevention and support systems in at-risk Neighborhoods and communities.
PRISON FELLOWSHIP'S ANGEL TREE CHRISTMAS	VARIOUS AREAS OF THE STATE	1-800-552-6435	To provide a joyful Christmas to children whose parents are incarcerated, to strengthen the parent/child relationship and to

			fulfill the purposes for their lives.
YOUTH HOME	20400 COLONEL GLENN, LITTLE ROCK, AR, 72210	821-5500	Helps emotionally troubled youth and families by providing mental health services.



ANIMAL CARE AND SERVICES

Agency/Organization	Address	Phone	Services Provided
CARE—CENTRAL ARKANSAS RESCUE EFFORT FOR ANIMALS, INC. www.careforanimals.org	5516 KAVANAUGH BLVD LITTLE ROCK, AR 72207	603-2273	Care is working to reduce the number of unauthorized, unwanted animals through aggressive rescue and spay/neuter programs.
HEARTS AND HOOVES www.heartsandhooves.com	2308 KELLOGG ACRES RD., SHERWOOD, AR, 72120	834-8509	To provide therapeutic horseback riding for persons with disabilities.
HUMANE SOCIETY OF PULASKI COUNTY www.warmhearts.org	14600 COLONEL GLENN RD., LITTLE ROCK, AR, 72210	227-6166	Provides shelter, medical help and homes for unwanted and abused animals.
LITTLE ROCK ZOO DOCENTS Contact: Susan Harris	1 ZOO DRIVE LITTLE ROCK, AR, 72205	661-7229	Educates the public about animals and their behavior.



UAMS PROGRAM SITES 2019-2020



UAMS Head Start/Early Head Start Central Office

7415 Colonel Glenn
Little Rock, AR 72204
570-5000/ Fax 570-5011
headstart.uams.edu

Site	Address	Phone	Head Start Services Preschool Ages: 3-4	Early Head Start Services Infant/ Toddler Ages: 0-3
PTC	8901 Kanis Road Little Rock, AR 72205	501-570-5000	✓	
Chicot Early Head Start	7703 DePriest Street Mabelvale, AR 72103	526-7070 / 526-7567		✓
Kennedy Head Start / Early Head Start	4901 W. 65 th St. Little Rock, AR 72209	565-6533	✓	✓
Metropolitan Tech Head Start	7701 Scott Hamilton Rd. Little Rock, AR 72209	447-1245 / 447-1243	✓	
Sherwood Elementary Head Start	307 Verona Street Sherwood, AR 72120	501-590-7529	✓	
Southwest Head Start	5615 Geyer Springs Road Little Rock, AR 72209	603-1342 / 603-1343	✓	
St. Augustine Head Start / Early Head Start	1410 E. 2 nd Street North Little Rock, AR 72114	414-8921 / 353-1490 379-8539	✓	✓
UAMS Methodist Children's Home (MCH)	2002 S. Fillmore Street Little Rock, AR 72205	904-5377/904-5378	✓	✓
UAMS Early Head Start Family Development Center	2725 W. 12st Street Little Rock, AR 72204	661-4001 / 296-1897		✓
Home based and Pregnant Women Program	8901 Kanis Road Little Rock, AR 72205	501-570-5000		
UAMS Head Start/Early Head Start Central Office	8901 Kanis Road Little Rock, AR 72205	501-570-5000		

“Every Child Deserves a Head Start”

Sites may change depending on Federal Funding level for 2019-2020
Los Centros pueden cambiar dependiendo del nivel de Fondos Federales para el 2019-2020



NEIGHBORHOOD RESOURCE CENTERS



Agency/Organization	Address	Phone	Services Provided
HOUSING & NEIGHBORHOOD PROGRAMS DEPARTMENT DIRECTOR – VICTOR TURNER VTURNER@LITTLEROCK.GOV	LITTLE ROCK CITY HALL ROOM 120W 500 WEST MARKHAM STREET LITTLE ROCK, AR 72201	371-4748	(1) Build trust in City Services and Staff (2) Broadcast a sense of unified neighborhood intolerance for drug and criminal activity (3) Deny drug dealers and customers access to open space in the neighborhood (4) Remove the sense of impunity street market dealers feel (5) Clean up the neighborhoods (6) Create a climate of achievement and reclaim neighborhood power. GOALS: (1) serve to create of climate of achievement and neighborhood empowerment. (2) foster partnerships between the City and neighborhood organizations (3) serve as facilities to access various City services.
WRIGHT AVENUE FACILITATOR – WILLIE CARPENTER, SUPERVISOR WCARPENTER@LITTLEROCK.ORG	1813 WRIGHT AVENUE LITTLE ROCK, AR 72202	244-0900	
EAST BROADWAY FACILITATOR & EAST LR FACILITATOR – BERT BUTLER BBUTLER@LITTLEROCK.GOV	500 EAST 21 ST STREET LITTLE ROCK, AR 72206	376-3406	
SWLR FACILITATOR – VALERIA TATE VTATE@LITTLEROCK.GOV	5621 VALLEY DRIVE LITTLE ROCK, AR 72209	562-0042	
OAK FOREST FACILITATOR – LARRY JOHNSON LJOHNSON@LITTLEROCK.GOV	2823 TYLER STREET LITTLE ROCK, AR 72204	666-0916	
WEST BASELINE FACILITATOR – LINDA WILLIAMS LWILLIAMS@LITTLEROCK.GOV	9209 MANN ROAD LITTLE ROCK, AR 72209	565-1499	
SOUTH END FACILITATOR – ARNUARD CRUMP ACRUMP@LITTLEROCK.GOV	1100 WEST 33 RD STREET LITTLE ROCK, AR 72206	370-9537	
WEST CENTRAL FACILITATOR – CHRIS PORTER CPORTER@LITTLEROCK.GOV	4200 BARROW ROAD SUITES B & C LITTLE ROCK, AR 72204	565-4807	
BASELINE FACILITATOR – SHAUN SMITH SSMITH@LITTLEROCK.GOV	4600 BASELINE ROAD LITTLE ROCK, AR 72209	565-4669	
WAKEFIELD FACILITATOR – IGLORIDA CONLEY ICONLEY@LITTLEROCK.GOV	7414 DOYLE SPRINGS ROAD, LITTLE ROCK, AR 72209	565-7119	
CENTRAL HIGH FACILITATOR – VALERIE CONWAY VCONWAY@LITTLEROCK.GOV	1108 SOUTH PARK STREET LITTLE ROCK, AR 72202	376-7610	

CAPITOL VIEW-STIFFT STATION FACILITATOR – KATHLEEN COUNTRYMAN KCOUNTRYMAN@LITTLEROCK.GOV	2715 WEST 7 TH STREET LITTLE ROCK, AR 72205	372-3856	
WILLIE L. HINTON NEIGHBORHOOD RESOURCE CENTER	3805 W. 12 TH STREET LITTLE ROCK, AR 72204	379-1515	The Center is a problem-solving center for the citizens of Little Rock. By facilitating partnerships with appropriate resources and forging collaborations among local government, businesses, universities, not for profit agencies, small businesses and community resources, contribute to building a stronger community.

The aims of the Neighborhood Alert Centers:

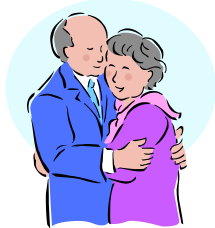
- ✚ Assist residents to create neighborhood groups such as crime watches and neighborhood associations.
- ✚ Assist with the organization of neighborhood business and religious alliances.
- ✚ They have organized and participated in neighborhood clean-ups.
- ✚ Neighborhood facilitators approached City Hall with the idea of creating a tool lending library through the alert centers so residents would have access to yard tools and lawn mowers to promote neighborhood beautification.
- ✚ Frequent neighborhood functions, such as open houses and block parties to boost neighbor-to-neighbor and neighbor-to-city staff relations.



SENIORS

Agency/Organization	Address	Phone	Services Provided
CARELINK MEALS-ON-WHEELS	706 W. 4 th NLR, AR 72114	372-5300	Serving Pulaski, Faulkner, Saline, Prairie, Monroe and Lonoke counties. To provide services that help mature adults live as independently as possible.
DHS-DIVISION OF AGING & ADULT SERVICES www.daas.ar.gov	700 MAIN ST. LITTLE ROCK, AR 72201	682-2441 1-800-482-8049 (abuse hotline)	Focal point for matters concerning Arkansans, adult protective services unit.
JACKSONVILLE SENIOR CENTER www.Jacksonvilleseniorcenter.com	100 VICTORY CIRCLE JACKSONVILLE, AR 72076	982-7531	Provides mature adults with home delivered and on-site meals, socialization, transportation, arts, crafts, and chore service.
JOHN L. McCLELLAN	4300 W. 7 TH	257-1000	Medical care and treatment

MEMORIAL VETERANS HOSPITAL	STREET, LITTLE ROCK, AR 72205		for veterans ONLY.
LIFE QUEST OF ARKANSAS	600 PLEASANT VALLEY DRIVE LITTLE ROCK, AR 72227	225-6073	To provide senior citizens with home delivered meals, transportation, minor home repair, as well as educational opportunities.
MAUMELLE CENTER ON THE LAKE	2 CLUB MANOR COVE, MAUMELLE, AR 72113	851-4344	To provide essential services through inter-faith volunteer care recipients, to enhance their quality of life by assisting with minimal daily tasks ensuring their independence.
ELMCROFT ASSISTED LIVING AT MAUMELLE	100 BRINGLER ROAD, MAUMELLE, AR 72113	851-0400	To provide warm, caring, safe home for senior citizens.
ELMCROFT ASSISTED LIVING AT SHERWOOD	9880 BROCKINGTON RD., SHERWOOD, AR 72120	835-6000	Provides supportive living environment for senior adults.
RETIRED & SENIOR VOLUNTEER PROGRAM (RSVP) www.rsvpcenark.org	16117 HWY 365 S WRIGHTVILLE, AR 72183	897-0793 897-0794	To recruit, train and place senior volunteers with other agencies.



DISABLED/EXCEPTIONAL PEOPLE



Agency/Organization	Address	Phone	Services Provided
AEDD www.aeddinc.org	105 E. ROOSEVELT ROAD LITTLE ROCK, AR 72206	666-0246	To provide optimum comprehensive services to developmentally disabled individuals in Arkansas.
ARC OF ARKANSAS www.arcark.org	2004 S. MAIN STREET LITTLE ROCK, AR 72206	375-7770	Supports and advocates for people with developmental disabilities, provides employment and housing programs, recreational activities, performing arts institute.
ARKANSAS DISABILITY COALITION www.adcpti.org	1501 N. UNIVERSITY AVE., SUITE 221, LITTLE ROCK, AR 72207	614-7020	Advocates for people with Disabilities and provides parent support and information network.
ARKANSAS SPECIAL OLYMPICS www.specialolympicsarkansas.org	2115 MAIN STREET NLR, AR 72114	771-0222	Provides athletic competitions and training for special people.

ARKANSAS SPINAL CORD COMMISSION www.spinalcord.ar.gov	5800 W. 10 th Street, #108, Little Rock, AR 72204	296-1788 1-800- 459-1517	Identifies and meets needs of people with spinal cord disabilities.
CAMP ALDERSGATE www.campaldersgate.net	2000 ALDERSGATE ROAD LITTLE ROCK, AR 72205	225-1444	Provides traditional camping opportunities for disabled, sick and/or at risk children and senior citizens.
DHS-DIVISION OF SERVICES FOR THE BLIND	700 MAIN STREET LITTLE ROCK, AR 72201	682-5463	Provides support and services to blind and visually impaired Arkansans.
DISABILITY RIGHTS CENTER	400 W. CAPITOL AVE., SUITE 1200 LITTLE ROCK, AR	296-1775 1-800- 482-1174	Protects the human, civil and legal rights of individuals with disabilities.
EASTER SEALS DEVELOPMENT	3920 WOODLAND HEIGHTS ROAD LITTLE ROCK, AR 72212	227-3600	Provides services that enable children & adults with disabilities lead independent lives.
FRANCIS ALLEN SCHOOL FOR EXCEPTIONAL CHILDREN, INC.	824 N. TYLER LITTLE ROCK, AR 72205	664-2961	Provides education and day services for special needs children from birth to age five.
GOVERNOR'S COMMISSION ON PEOPLE WITH DISABILITIES	1 Commerce Way Little Rock, AR 72202	296-1637 1-800- 330-0632	Improves the quality of life and economic opportunities for Arkansans with disabilities.
LIBRARY FOR THE BLIND & PHYSICALLY HANDICAPPED	900 W. CAPITOL AVE STE 100, LITTLE ROCK, AR, 72201	682-1155	Provides recorded and Braille books on free loan.
LIONS WORLD SERVICES FOR THE BLIND	2811 FAIR PARK BLVD. LITTLE ROCK, AR 72204	664-7100	To assist visually impaired/blind persons with living dignified, independent lives.
PATHFINDER, INC.	2400 W. MAIN JACKSONVILLE, AR 72076	982-4578 982-0528	Assists children with disabilities to integrate in public schools.
UNITED CEREBRAL PALSY	9720 N. RODNEY PARHAM, LITTLE ROCK, AR, 72227	224-6067	To advance and enhance the independence of people with disabilities.
ST. LUKE'S RESPITE CARE CENTER	4106 JFK BLVD NLR, AR 72116	753-4281	To provide a safe and interactive care center for disabled adults and allow their caretakers a short break. Thursdays 9-2 \$15 per person snack and lunch
LEARNING DISABILITIES ASSOCIATION www.ldarkansas.org	P.O. BOX 23514 LITTLE ROCK, AR 72221	666-8777	Provides current information on learning disabilities.



ENVIRONMENT/OUTDOORS



Agency/Organization	Address	Phone	Services Provided
KEEP LITTLE ROCK BEAUTIFUL ADOPT-A-STREET PROGRAM Contact: Glenn Haley	701 W. MARKHAM LITTLE ROCK, AR 72201	765-3530	Cleans the streets of the City of Little Rock.
ARKANSAS 4-H CENTER www.arkansas4hcenter.org	#1 4-H WAY, LITTLE ROCK, AR 72223 (10 MILES WEST OF LR)	821-4444	Provides adventure based, hands-on opportunity for young people.
ARKANSAS GAME & FISH COMMISSION www.agfc.com	#2 NATURAL RESOURCES DRIVE LITTLE ROCK, AR 72205	223-6300 1-800-364-4263	Manages fish and wildlife resources and provide enjoyment to the public.
OAK FOREST COMMUNITY GARDEN Contact: Debbie Dillard Preston	2500 S. MONROE ST. LITTLE ROCK, AR 72204	664-7179	Provides a place for neighborhood residents to grow their own vegetables. Youth Programs: a 4H Club, summer job program, beautification and environmental restoration efforts.
PARTNERS FOR PINNACLE, INC. – PINNACLE MOUNTAIN STATE PARK www.Partnersforpinnacle.com	11901 PINNACLE VALLEY ROAD ROLAND, AR	868-5806	To preserve and promote a natural environment and to enhance understanding and appreciation of the natural world.
REGIONAL RECYCLING & WASTE REDUCTION DISTRICT www.regionalrecycling.org	300 SPRING SUITE 200 LITTLE ROCK, AR 72201	340-8787	Promotes waste reduction, recycling and environmental education.



LEGAL/LAW ENFORCEMENT SERVICES

Agency/Organization	Address	Phone	Services Provided
COURT APPOINTED SPECIAL ADVOCATES (CASA)	3001 W. ROOSEVELT LITTLE ROCK, AR 72204	340-6732 (Supervisor– Jeni Smith) 340-6741 (Exec. Director– Darryl Capps) 340-6946	Provides court advocates for abused and neglected children. www.pulaskiountycasa.org

		(Supervisor- Tamara Keech) Fax 340-6956	
DISABILITY RIGHTS CENTER	400 W. CAPITOL, STE 1200 LITTLE ROCK, AR 72201	296-1775 1-800-482-1174	Advocacy group supporting the rights of the disabled.
PULASKI COUNTY VOLUNTEER PROBATION OFFICER PROGRAM	3001 W. ROOSEVELT LITTLE ROCK, AR	340-6700	Volunteers as probation officers to minors who are under court.
U.A.L.R. WILLIAM H. BOWEN SCHOOL OF LAW – LEGAL CLINIC	1201 McMATH AVENUE, RM 105, LITTLE ROCK, AR 72202-5142	324-9441	Litigation, Mediation, and Tax Clinics. Usually available on January or August (at the beginning of each semester). Special mediation clinic for special education students and their families.
ARKANSAS COALITION AGAINST DOMESTIC VIOLENCE www.domesticpeace.com	700 S. ROCK ST., LITTLE ROCK, AR, 72202	907-5612 Toll Free 1-800- 269-4668 Emergency	Provides a supportive connection for domestic violence service providers in Arkansas. To eliminate personal and institutional violence against women and their children through programs providing support and safety to battered women and their children; education, system advocacy and social change activities.
ARKANSAS CRIME VICTIMS REPARATIONS PROGRAM	323 CENTER STREET LITTLE ROCK, AR, 72201	682-1020 Toll Free 1-800-448-3014	Provides financial compensation to victims who have suffered personal injury or death as the result of violent crime must meet eligibility.
ARKANSAS VOLUNTEER LAWYERS FOR THE ELDERLY (AVLE)	2020 WEST 3 RD STREET SUITE 517 LITTLE ROCK, AR	376-9263 *to volunteer, contact Catherine Edwards 800-999-2853	Legal services for clients ages 55 and older, adoption, bankruptcy, consumer, child custody, marriage dissolution, elder law, employment, health, housing, public benefits, real estate, torts and wills.
MAINSTREAM	300 SO. RODNEY PARHAM SUITE 5 LITTLE ROCK, AR	280-0012 TDD 280-9262	Provides training on disability rights, laws, regulations, benefits, and advocacy strategies.
ARKANSAS BAPTIST CHILDREN'S HOME – LITTLE ROCK FAMILY CARE HOME	6 Physicians Court, Little Rock, AR 72205	376-4791 or 501-508-5310	Helps single mothers, counseling for individuals and families, access to employment resources, education and training assistance, life skills training, money management guidance, and parenting resources.

ARKANSAS LEGAL SERVICES PARTNERSHIP www.arlegalservice.org	1300 W. 6 TH ST LITTLE ROCK, AR 72201	Service/Intake Pulaski County Residents 376-3423 or Service/Intake Statewide outside Pulaski County 1-800-950-5817	Provides free civil (not criminal) legal assistance to low-income family/elderly, consumer finance/debt problems, public benefits (like SSI), housing, adoptions/guardianships, and bankruptcy/ repossessions. Call 1-8009LAWAID (52-9243) to be referred to the closest service location.
ARKANSAS DEPARTMENT OF LABOR www.labor.arkansas.gov	900 West. Capitol Ave. LITTLE ROCK, AR 72201	682-4500 Toll Free - National Call Center 1-866-487-2365	The agency is charged to enforce the labor laws of the State of Arkansas. It's mission is to foster, promote, and develop the welfare of the wage earners of Arkansas, to improve their working conditions, and to advance their opportunities for profitable employment.
ARKANSAS OFFICE OF CHILD SUPPORT ENFORCEMENT	322 S. MAIN ST. STE 100 LITTLE ROCK, AR 72201	371-5400 Toll Free 1-800-731-3071	Establishes parental proof through paternity testing and court proceedings, establishes child support orders; enforces and establishes wage withholding through court.
CATHOLIC IMMIGRATION SERVICES Mailing address: 2500 N. Tyler Little Rock, AR	2415 N. TYLER STREET LITTLE ROCK, AR 72207	664-0340 X-314	By appointment. Low cost counseling and support to those eligible for immigration benefits and who cannot afford private assistance.
PARENTS OF MURDERED CHILDREN - CENTRAL ARKANSAS CHAPTER Contact: Elaine Colclasure	1015 WEST 2 ND ST., STE 201 LITTLE ROCK, AR 72201	351-7662 680-8570	Trains and educates professionals who are interested in learning more about survivors of homicide victims and the devastating effects murder has on their lives.
MEXICAN CONSULATE IN LITTLE ROCK	3500 S. UNIVERSITY AVE LITTLE ROCK, AR 72204	372-6933	Monday thru Friday 8:00 am - 5:00 pm. Assisting with domestic violence, labor discrimination, violation of labor rights, child abuse, child kidnapped, sexual abuse.
MORGAN NICK FOUNDATION	CONFIDENTIAL ADDRESS P.O. BOX 1033 ALMA, AR 72921	1-479-632-6382 Toll Free 1-877-543-4673	Provides educational brochures, literature, seminars and training about child abduction for families in Arkansas. Also, provides instructions for created DNA and Child Identification kits.
ARKANSAS FAMILY READINESS SUPPORT ASSISTANT (FRSA)	BUILDING 6402 NLR, AR 72199	212-4019 1-800-446-4645	Provides resources and information for families of Arkansas National Guard enlisted members who

			are deployed.
VICTIM AND WITNESS ASSISTANCE PROGRAM 6TH JUDICIAL DISTRICT	224 SOUTH SPRING STREET LITTLE ROCK, AR, 72201	340-8000 Service/Intake 340-8100	Offers assistance to victims and witnesses of violent crimes and a citizen complain department.



Domestic Violence/Crime



Agency/Organization	Address	Phone	Services Provided
ARKANSAS COALITION AGAINST DOMESTIC VIOLENCE	1401 W. CAPITOL SUITE 170 LITTLE ROCK, AR	907-5612	Eliminates violence against women. www.domesticpeace.com
DORCAS HOUSE www.urmissionlr.org	823 S. PARK STREET LITTLE ROCK, AR 72202	374-4022	Shelter for homeless and abused women and children.
FAMILY SERVICE AGENCY www.helpingfamiliesfirst.org	628 W. BROADWAY SUITE 300 NLR, AR 72114	372-4242	25 Week educational program designed to help the participant stop battering.
WOMEN AND CHILDREN FIRST www.wcfarkansas.org	P.O. BOX 1954 LITTLE ROCK, AR 72203	376-3219	Provides shelter and support services to battered women and their children.

SUBSTANCE ABUSE

Agency/Organization	Address	Phone	Services Provided
YOUTH LEADERSHIP INITIATIVE	628 W. BROADWAY SUITE 201 NLR, AR 72114	310-0607	Educates community in the development of healthy drug free youth.
ARKANSAS CARES	5821 CHARLES BUSSEY LITTLE ROCK, AR	661-0720	Provides services to mothers recovering from alcohol and drug addiction.
METHODIST FAMILY HEALTH'S LR RESIDENTIAL TREATMENT CENTER	2002 S. FILLMORE LITTLE ROCK, AR 72204		
RECOVERY CENTERS OF ARKANSAS www.rcofa.org	1201 RIVER ROAD NLR, AR, 72114 (RIVERBEND) 6301 FATHER TRIBOU LITTLE ROCK, AR 72205 (WILLIAMSBURG) 6225 FATHER TRIBOU	372-4611	Provides outpatient and residential chemical dependency treatment.

	LITTLE ROCK, AR 72205 (STEEPLECHASE APARTMENTS)		
STEP-UP SUPPORT CENTER www.thestepupsupportcenter.com	9010 HILARO SPRING RD., LITTLE ROCK, AR 72209	565-1333	Brings an end to substance abuse and related problems.
AR CENTRAL SERVICE OFFICE (AA) www.arkansascentraloffice.org	7509 CANTRELL RD. #106 LITTLE ROCK, AR 72207	664-7303	Providing contact information, place, date, and times for Alcoholics Anonymous meetings throughout Arkansas.
BCD, INC. - HOOVER TREATMENT CENTER WWW.BCDINC.ORG	3604 WEST 12 TH ST., LITTLE ROCK, AR 72204	663-4774	Inpatient / long term treatment for all drugs and alcohol. Accepts amphetamines, meth, and cocaine long term. NO DETOX.
NEHEMIAH HOUSE A DIVISION OF UNION RESCUE MISSION EXECUTIVE OFFICE www.urmissionlr.org	2921 CONFEDERATE BLVD., LITTLE ROCK, AR 72206 3001 CONFEDERATE BLVD., LITTLE ROCK, AR 72206	370-0808 374-1108	Long term treatment for men. Must complete interview with facility before entering. 9-month program. Fee \$75 deposit which is returned if client completes program.

DEPARTMENT OF HUMAN SERVICES LOCATIONS IN PULASKI COUNTY

- ✚ **Pulaski South DHS Office – 1105 Martin Luther King Jr. Drive – Little Rock, AR – 501-682-9200 - TTD 501-682-0102 – Fax 501-682-9382 (Administrator: Julunda Gipson)**
- ✚ **Pulaski North DHS Office – 1900 East Washington Avenue – North Little Rock, AR 72119 – 501-682-0100 – TTD 501-682-0102 – Fax 501 682-0101 (Administrator: Boylee Hamilton)**
- ✚ **Pulaski Southwest DHS Office - 6801 Baseline Road – Little Rock, AR 72219 501-371-1100 – TTD 501-371-1111 – Fax 501-371-1101 (Administrator: Felicia Lovelace-Alexander)**
- ✚ **Pulaski East DHS Office - 1424 East Second Street – Little Rock, AR 72203 501-371-1300 – TTD 501-371-1311 – Fax 501-371-1301 (Administrator: Ellen Banks)**

COMMUNITY RESOURCE WEBSITES

www.arkansasmatters.com

A new and advanced Community Events Calendar site - To find some of the hottest events around Arkansas, click on one of the categories listed. You can also click on a specific date, browse by month using the navigation arrows, or click the drop-down menu to select yearly events.

www.nlr.ar.gov

Functions as information center whose services impact a diverse clientele, including the public, the media, and other government entities - Services City Attorney, City/County Planning Offices, City/Town Clerk Offices, Notary Signature Registration/Validation, State Officials Offices, Zoning, etc...

www.accesslittlerock.org

Functions as information center whose service impact a diverse clientele, including the general public, the media, and other government entities – local, national and online business spotlight blog.

www.arkansas.gov

An English/Español websites whose service impact about Arkansas, Government, Online Services, Business, Community, Education, Family Travel,

311/Non-Emergency and City Government – City of Little Rock

www.littlerock.gov

Services that residents, businesses and visitors can call to make inquiries regarding services, report problems, check the status of issues or obtain general information. The 3-1-1 service is part of an ongoing effort to make city governments easier and more responsive to the needs of residents, its business owners and visitors.

www.ssa.gov

For general information and services, call 7:00 am – 7:00 pm 1-800-772-1213.

Little Rock Social Security Office, 1-866-593-0933

700 West Capitol, Room 1201 Little Rock, AR 72201 Monday thru Friday 9:00 am – 3:30 pm,
Wednesday 9am- noon.

Sherwood Social Security Office, 1-877-512-3854 3608 E. Kiehl Avenue, Sherwood, AR 72120
Monday thru Friday 9:00 am – 3:30 pm, Wednesday 9am-noon.

Unemployment Office

Arkansas Department of Workforce Services

5401 South University Ave. Little Rock, AR 72209. (501) 682-2257 Open Monday thru Friday, 8:00 am – 4:30 pm, unemployment office, fax, phone, copy machine, job search related computer lab.

511/Traveler Information

The 511 service is still being developed in Arkansas. For the latest information about construction and weather related road conditions, visit www.idriveArkansas.com

www.ellatinoarkansas.com

EL Latino – 201 East Markham Suite 200 – Little Rock, AR 72201
501-374-0853 Spanish newspaper whose services impact the community.

www.hola-arkansas.com

Arkansas Premier Bilingual Newspaper that provides Local News, National News, Exclusive Interviews, Health, Immigration, Hispanic PR Wire.

www.VivaArkansas.com

Viva Arkansas! English/Spanish Magazine - 14106 Chicot rd., Suite 2, Mabelvale, AR 72103



Consulate of Mexico – 3500 South University Avenue Behind Bank of America
Little Rock, AR 72204 – 501-372-6933 ext 223 Administrative. Services offered provides information and referrals for services that are available for individuals who are either citizens of Mexico or who identify themselves as part of the Mexican community. Services Area: Arkansas, Oklahoma, Tennessee.

<http://consulmex.sre.gob.mx/littlerock/>



Arkansas Department of Career & Education

Office of Governor Asa Hutchinson State Capitol, Room 250 – 500 Woodlane Ave. Little Rock, AR 72201 - 501-682-2345

Yessica Jones serves as the Governor’s liaison to Hispanic community and a resource to departments, commissions, and agencies to ensure that they are aware of the needs of the Hispanic community and that this community benefits in an equitable fashion from their services and programs.

www.arheadstart.org/

Arkansas Head Start Association and Arkansas Head Start State Collaboration Office
Union Station, 1400 West Markham Street, Ste 406, Little Rock, AR 72201
(Toll Free) 1-866-371-0740 501-371-0740

Head Start is a nationwide, federally funded, program designed to foster healthy development of young children from low-income families. Launched in 1965 as a summer program to prepare children for school, Head Start in Arkansas has grown to serve over 11,000 children, birth to five, and their families in all 75 counties.

www.arkansasliteracy.org

Arkansas Literacy Councils - 801 South Louisiana Street Little Rock, AR 72201 501-907-2490
A non-profit corporation to support local, nonprofit literacy councils that recruit and train volunteers to help adults improve their basic reading and writing skills.

www.communityactionpartnership.com

This website provides a list of member CAA and CAA State Associations. It is based on information provided to the Community Action Partnership National Office by their members. Because each Community Action Agency is governed locally, each provides a different mix of programs and services. The following is a list of services provided: food pantries, energy assistance, homeless shelters, domestic violence, Head Start, youth mentoring, Meals on Wheels, congregate feeding, food banks, job training, budget counseling, self-help housing, homeownership, rental assistance, weatherization, etc.

www.arkansas.gov/dhs/

The AR Department of Human Services – Customer Assistance – 1-800-482-8988 – 501-682-1001
DHS offers hundreds of services to more than 700,000 people each year. These services are delivered through ten major divisions and five support offices. Family Services, Children’s Services, Senior Services, Disabled Services, Health Services, Juvenile Services, Citizens in Need, Community Services, etc.

www.healthy.arkansas.gov

For information and referral concerning Healthy Arkansas, Maternal Child Health, Department of Health projects and general health related topics contact Arkansas Department of Health located 4815 W. Markham St., Little Rock, AR 72205 at 1-800-462-0599 and 501-661-2000.

The services offered are Parent & Kids, Hometown Health, Public Health Preparedness, Data Research, Birth & Death Certificates, Permits, Occupational Licenses & Certification, Disease & Prevention Services, Your Environment, etc.

www.uams.edu

The UAMS website is an online information service of the University of Arkansas for Medical Sciences. The Website provides News, Publication & Multimedia, Calendars & Events, Links & Resources, Job Listing, UAMS Classes, etc...

